



# DoD TRAUMA REGISTRY DATA DICTIONARY

Version 3.2, Build 44 - Apr 2018, updated Nov 2019



# Introduction & History

---

The Joint Trauma System (JTS) is the Department of Defense (DoD) authority for the military's trauma care system. The vision of the Joint Trauma System is that every Soldier, Sailor, Marine and Airman injured on the battlefield will have the optimum chance for survival and maximum potential for functional recovery. To achieve this vision, in 2006, the JTS implemented programs for data-driven trauma system development and improvement in addition to the collection of trauma data. As part of its data collection efforts, the JTS maintains a registry of trauma patients who received care at medical treatment facilities (MTFs). Since 2007, this registry – known as the DoD Trauma Registry (DoDTR) – has documented demographic, injury, treatment, and outcomes data for all trauma patients admitted to any DoD MTF, regardless of whether the injury occurred during on-going military operations, and is the largest military trauma data source in the world.

Development of the DoDTR began during the early years of the Global War on Terror (GWOt) when the need to systematically improve trauma care for combat wounded resulted in the impromptu creation of a demonstration registry, known then as the Combat Trauma Registry (CTR). The CTR was constructed by the Center for AMEDD Strategic Studies (CASS); trauma-related information was initially abstracted into it from paper medical records received from trauma nurse coordinators (TNCs) at Landstuhl Regional Medical Center (LRMC) in Germany. Shortly after the demonstration program started, the Army Surgeon General approved its transition to an operational mode, leading to the formation of the Joint Theater Trauma System (JTTS) and, eventually, the Joint Trauma System (JTS).

In 2006, the JTTS was tasked with developing the Joint Theater Trauma Registry (JTTR), the successor to the CTR. The first version of the JTTR was created using the National Trauma Data Bank (NTDB) as a template and a commercial, off-the-shelf product manufactured by Digital Innovation, Inc for the database. Once completed, legacy data previously collected for the CTR was migrated to the new Windows®-based JTTR, and staff located at LRMC started abstracting data directly into this version beginning in early 2007. Later that year, TNCs were also deployed to theater to collect trauma data using a “store and forward” adaptation of the JTTR. By fall 2008, data were being abstracted into a second version of the JTTR, not only by JTS staff at LRMC and TNCs in theater, but also abstractors located at Fort Sam Houston in San Antonio, TX.

Over the next several years, the JTTR evolved to capture data more specific to evaluating military policies, processes, and practices, and a web-based version was released in October 2011 for use by all DoD MTFs interested in providing data for the registry. Since December 2014, abstraction of all theater records has been centralized at the JTS headquarters in San Antonio. Records of patients treated at MTFs outside the continental U.S. (i.e. LRMC (Role 4 OCONUS)) and MTFs in the continental U.S. (i.e. Role 4 CONUS) are typically abstracted by trained staff at the treatment facility, although JTS staff may provide assistance when needed.

To date, more than 400 variables are captured in the DoDTR, abstracted from original paper and/or electronic records. Sources of data include, but are not limited to, Tactical Combat Casualty Care (TCCC) cards, patient care reports (PCRs), after action reports (AARs), facility medical records, Defense Enrollment Eligibility Reporting System (DEERS), Theater Medical Data Store (TMDS), Patient Administration Systems and Biostatistics Activity (PASBA), and TRANSCOM Regulating and Command & Control Evaluation System (TRAC2ES). Data are abstracted, when possible, for the entire continuum of acute care (i.e., care in the field at the point of injury through care rendered at role 4 CONUS MTFs, such as Walter Reed National Military Medical Center and Brooke Army Medical Center in the continental U.S.) As of April 2018, the main registry has over 80,000 distinct injury events and more than 130,000 trauma records that can potentially be used to better understand the burden of injury, morbidity, and mortality.

This document provides a list of the available data files and detailed descriptions of the variables contained in each file. Variables where <10% of the applicable population has a missing value or where the integrity of the data is questionable are not included. SAS® and STATA® sample programs are available to help researchers with merging files and recoding variables. Please be aware that the JTS does not provide statistical support and does not assist with analyses for research projects.

# Inclusion/Exclusion Criteria

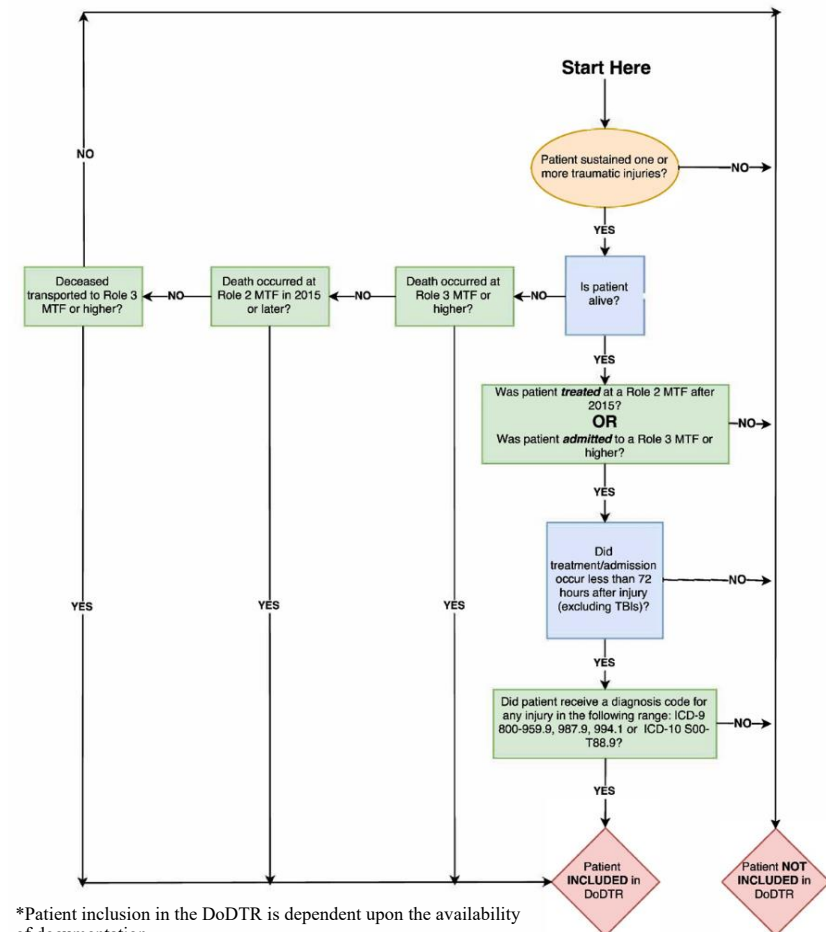
## Patients included in the DoDTR:

- Any trauma casualty, designated by one of the above trauma diagnosis codes, treated at a Role 2 or higher Medical Treatment Facility (MTF) within 72 hours of injury (time rule applies to initial facility seen within the continuum of care) that meets ONE of the following conditions:
  1. Admission to Inpatient Status
  2. Transfer from ED/OR to another MTF for trauma care (excludes outpatient clinics)
  3. Trauma Deaths processed (record generated) at Role 2 or higher facility including:
    - Killed in Action (KIA)
    - Dead on Arrival (DOA)
    - Died of Wounds (DOW)
- Traumatic Brain Injury patients with a defined head trauma diagnosis code treated at a Role 2 or higher MTF/Civilian Hospital, regardless of when injury occurred or disposition status.
- Role 4/5's: Patients who sustained injury and do not meet above criteria may be entered into the DoDTR at the discretion of each facility.
- Patients remain eligible for inclusion as long as they remain in a MTF inpatient status for trauma care. Once the patient is discharged from acute care or permanently transferred to a non-MTF facility, data capture stops.

## Patients excluded from the DoDTR:

- Rehabilitation ONLY patients.
- Patients who are boarded or remain overnight at a facility awaiting transfer to another MTF who do not receive medical treatment
- Military working dogs, contract, host nation
- Psychological admissions
- Same day surgery patients: Do NOT include outpatients undergoing same day surgical procedures. This includes patients admitted to the medical/surgical ward for recovery only.
- Missing definitive trauma Dx (symptoms only)
- Planned follow-up procedure admissions. Example: Local nationals returning for IVC removal. If the MTF elects to capture removal of IVCs, place a note in the Memo field of the original DoDTR record.
- Medical Admissions: All non-trauma related admissions to include patients who have had recent traumatic injuries but are not being admitted for treatment of those injuries.

## DoDTR inclusion criteria



\*Patient inclusion in the DoDTR is dependent upon the availability of documentation.  
 \*Role 4 CONUS & OCONUS MTFs have the discretion to include patients in DoDTR who do not meet inclusion criteria.

## Trauma diagnosis codes

- Trauma codes in the range: ICD-9 CM 800-959.9; ICD-10 CM S00-T88.
- Near drowning/drowning if related to injury (ICD-9 994.1; ICD-10 T75.1XXA)
- Inhalation Injury (ICD-9 987.9; ICD-10 T59.\*\*A)

# Analytic & Data Limitations

---

## Data Verification and Quality Assurance/Quality Checks

Validation checks were built into the abstraction process in 2007. This function verifies required fields are populated and will indicate if the data entered is out of the expected range.

Data are routinely examined for discrepancies and erroneous entries.

After record abstraction, data are reviewed by JTS QA staff for accuracy and completeness. A random sample of abstracted records are selected for QA on a weekly basis. Edits are made to some variables to ensure the completeness, consistency, and analytic usefulness of the data. Edits are also made, when necessary, to address data Operations Security (OPSEC) and Public Health Information (PHI) disclosure concerns.

The Data Acquisition Branch of the DoDTR is continually cleaning and standardizing the data to improve data quality.

Additional QA/QC practices include completing DoDTR-integrated range and validation checks during data abstraction, routine assessments of inter-rater reliability, scheduled and ad hoc validation reports, and the correction of data discrepancies. Identified discrepancies may be reported to DAB by any end-user; they are then placed in a queue for review and, if warranted, corrected in the DoDTR. Finally, a comprehensive review and assessment of all registry data, beginning with the most recent data and moving retrospectively and systematically through previously captured data, is being conducted to validate it against source documentation. Data for injury events that occurred in 2010 to present have been reviewed and validated.

## Essential Information for the Appropriate Use and Analysis of DoDTR Data including Limitations

There are numerous advantages of using registry data for medical research. However, investigators must also be aware of the limitations that generally apply to all registries as well as those specific to individual registries, such as the Department of Defense Trauma Registry (DoDTR). Although registries can be useful in conducting research by identifying patient cohorts that meet particular criteria, they are not primary research tools and are not designed to answer any specific scientific question. Data collection for registries is typically more passive than that for other types of epidemiology studies, and missing data can present a greater concern. Moreover, the value of a registry is inherently dependent on the quality of the data it contains. Because the DoDTR includes only a selective sample of data (from the subset of participating US military MTFs) for only a selective sample of the entire target population, inferences from statistical analyses of

DoDTR data should be made only with caution and after careful consideration of the sources of error and bias.

The DoDTR is an incident registry. A single patient may have multiple injury events captured in the registry depending on the number of incident injuries for which they were admitted for treatment. Data for each injury event is collected by manually abstracting predetermined information from paper records and various electronic information systems, which often contain conflicting accounts of patient care and treatment. To reconcile disparate information, the Data Acquisition Branch of the JTS has developed business rules that guide data abstraction and prioritize sources of information. Nevertheless, because much of the data in the DoDTR is abstracted from the medical record, it is only as complete as the information recorded by providers.

# Analytic & Data Limitations

---

More specifically, while a value of “yes” can be considered confirmed information, a value of “no” does not always mean the patient did not receive the treatment, procedure, etc. It could also simply mean the information was not documented. If the quality or completeness of the information available for abstraction differs by facility, the data may be susceptible to information bias. Additionally, while every attempt is made to document the entire continuum of acute care, a patient’s final disposition may not be known, particularly if the patient was a local national or was transferred to an MTF that does not contribute to the registry or any U.S. civilian facility. Researchers should be mindful that DoDTR data is not abstracted in real-time, and complete data for patients injured in the most recent calendar quarter may not yet have been abstracted or reviewed for errors due to reporting delays.

The population captured by the DoDTR is not a random sample of trauma patients treated at medical treatment facilities, and the DoDTR data are, therefore, subject to selection bias. Trauma logs of patients treated in theater, which are used to identify casualties to be included in the DoDTR registry, are submitted voluntarily to the JTS. In addition, trauma-related data from MTFs outside of theater are captured only for facilities that willingly choose to contribute to the registry. Of the 42 U.S. Army, Navy and Air Force MTFs outside of theater that currently provide emergency services, 7 submit data to the registry. Of these, four are Army treatment facilities. At present, the DoDTR does not include any maritime data.

In general, DoDTR data are comprised of a disproportionate number of injuries admitted to the larger Role 3 facilities in theater. This is primarily an effect of the original inclusion criteria, (see Inclusion Criteria & Data QA-QC tab), which has considerably changed over time. Initially, only patients admitted to a Role 3 MTF were included in the registry (i.e., patients that did not require evacuation to a Role 3 or died at a Role 2 or lower-level MTF were excluded). Beginning in 2015, patients treated solely at Role 2 MTFs were included in the registry

when records documenting care were available. Deaths that occur in a prehospital setting before being transported to a Role 3 for processing are often not included in the registry owing to a lack of documentation. Consequently, when data from the DoDTR are analyzed alone, survival bias may adversely affect the findings.

How data have been captured in the registry has also changed over time. Prior to 2012, care provided at prehospital facilities (i.e., combat medics (Role 1a), battalion aid stations (Role 1b), and clinics (Roles 1b and 1c) was documented in separate trauma records. For example, if a patient was treated at point of injury, a clinic, and a Role 3 facility, there would be a unique trauma record for each of these that captured information on patient vitals, procedures, and other care provided. Beginning in 2007, prehospital care provided at a Role 1a or 1b MTF was no longer documented in separate trauma records but, rather, included within the record for the first facility with surgical capabilities at which the patient received treatment. Prehospital care provided at a 1c was also captured within the record for the first surgical capability starting in 2012. Under this system for capturing prehospital data, the patient from the same example would only have one trauma record, and it would be for the Role 3 MTF. Any other care provided by the medic or at the clinic would be captured in the Arrival Transport section of the casualty’s Role 3 trauma record. Researchers should also be aware that the DoDTR does not capture duplicate codes for diagnoses or procedures on the same patient at a single facility. For example, if an individual had multiple CT scans while admitted to the ICU at a given facility the ICD-9/10 procedure code will only be recorded once for that facility.

Data from the DoDTR is provided in both wide and long formats depending on the data file. The *Demographic & Injury* data file will be in wide format (i.e., one record per person), whereas all other files will be in long format (i.e. there may be more than one record per person).



# Analytic & Data Limitations

---

Data in the *Demographic & Injury* file can be mapped to data in other DoDTR data files using the DoDTR\_ID variable only. However, data in files with a wide format must be mapped using both the DoDTR\_ID and Trauma\_ID variables. The Trauma\_ID variable should never be used by itself to map data from the different files.

Prior to being analyzed, DoDTR data must be cleaned and recoded. The data will contain outliers and missing values that should be carefully examined. Missing values most often occur when patient information is not recorded or documented at the time of patient care and may distort study results. The proportion of missing data will differ by variable and year, and possibly MTF. Data included in the DoDTR prior to 2008 are especially incomplete, as much of it was not abstracted to current standards and very little of it has been validated via the Data Acquisition Branch's ongoing retrospective audit of all DoDTR records. Accordingly, end-users should evaluate the degree of missingness in their dataset. As a general rule, if 10% or less of the data for a variable are missing roughly equally across the primary comparison groups, it is usually acceptable to analyze the data without further assessment or adjustment. However, if more than 10% of the data for a variable are missing, differences in missingness across relevant characteristics should be evaluated. For some variables, it may be possible to impute values for the missing data, by either single or multiple imputation. Whether missing data are excluded from an analysis or values are imputed, the effects of missing data on study results should be investigated by conducting sensitivity analyses.

When running the **SAS**® sample program provided, users will need to do the following:

- 1) Modify infile statement identifying saved location and format (i.e. txt, csv) of requested data file
- 2) Add format statements for date and time variables to change them to SAS date and times (i.e. ddmmyy10. , time6. etc.)

In all DoDTR datasets supplied after **April 2018**, missing values are denoted in the following way:

- a blank space for **character** and **numeric** variables

“Not Applicable” is another type of data value to consider during analysis. This type of value applies if, at the time of patient care documentation, the information captured did not pertain to the patient. For example, discharge vitals are only recorded for patients discharged alive and are not applicable to deceased patients.

In all DoDTR datasets supplied after **April 2018**, “Not Applicable” values are denoted in the following way:

- a value of "8," "88," "888," etc. depending on the number of digits in the variable value range for **numeric** variables, or
- the text "n/a" for **character** variables

Detailed information on valid values for each variable are provided in the sections following the Summary of Changes. Researchers should make certain the data being analyzed for their study are consistent and valid.

At present, automated data cleaning is limited with regard to inconsistencies between variables in order to avoid incorrectly changing or deleting values. There are, for example, instances where the number of vent days is greater than the facility length of stay or the injury date, and it is up to researchers to decide how to use that information.

Finally, due to on-going, regularly scheduled audits of all DoDTR records, results from similar statistical analyses conducted at different times or by different data analysts using DoDTR data from the same time periods may turn out to be less reproducible than expected. The DoDTR data are constantly being reviewed and updated.

## Table of Data Elements\*

<b>Registry Event</b> .....	<b>1</b>
Demographics .....	2
Injury.....	4
<b>Arrival Transport</b> .....	<b>6</b>
AT-Providers .....	6
AT-Procedures.....	8
AT-Vitals.....	10
AT-Medications & Blood .....	13
<b>MTF Arrival &amp; Discharge</b> .....	<b>14</b>
ED Arrival, Vitals & Labs.....	14
Discharge Info, Vitals & Labs.....	24
<b>Procedures &amp; Treatments</b> .....	<b>18</b>
Procedures .....	18
Miscellaneous.....	18
Complications.....	19
Blood & Fluid Products .....	19
<b>Diagnoses &amp; Trauma Scores</b> .....	<b>20</b>
Injury Dx .....	20
Trauma Scores.....	23
Non-trauma .....	24

## Points of Contacts

**JTS Data Release Branch**  
**Juli A Beadleston**  
 Defense Health Agency  
 3698 Chambers Pass  
 JBSA Ft. Sam Houston, TX 78234-6315  
 210-539-6168  
[juli.a.beadleston.civ@mail.mil](mailto:juli.a.beadleston.civ@mail.mil)

**JTS Deputy Director**  
**Mary Ann Spott, PhD, MPA, MSIS, MBA**  
 Defense Health Agency  
 3698 Chambers Pass  
 JBSA Ft. Sam Houston, TX 78234-6315  
 210-539-9174  
[mary.a.spott.civ@mail.mil](mailto:mary.a.spott.civ@mail.mil)

Page numbers are the page numbers of the embedded PDF listing of data elements.  
 Double click to open the PDF on the page following Summary of Changes.

The April 2018 edition of the DoDTR Data Dictionary reflects no modifications.

*Specific Changes (other than those listed above)*

<b>Tab</b>	<b>Change Made</b>
Demographic & Injury	New Variables: Deletion of Variables:
AT-Providers	New Variables: Deletion of Variables:
AT-Procedures	New Variables: Deletion of Variables:
AT-Vitals	New Variables: Deletion of Variables:
AT-Medications & Blood	New Variables: Deletion of Variables:
ED Arrival, Vitals & Labs	New Variables: Deletion of Variables:
Discharge Info, Vitals & Labs	New Variables: Deletion of Variables:
Procedures	New Variables: Deletion of Variables:
Complications	New Variables: Deletion of Variables:
Fluids & Blood Products	New Variables: Deletion of Variables:
Miscellaneous	New Variables: Deletion of Variables:
Injury Dx	New Variables: Deletion of Variables:
Trauma Scores	New Variables: Deletion of Variables:
Non-trauma	New Variables: Deletion of Variables:
Pre-existing Conditions	New Variables: Deletion of Variables:



# DATA ELEMENTS - Page 1

	A	B	C	D	E	F	G	H	I
	Registry Tab	Registry Subtab(s)	Data Element	Codebook Tab	Variable Name	Variable Description	Years Available / Began	Value Description/Format	Notes
1	Demographic	Event Summary	[DoDTR Number]	Demographic & Injury AT-Providers AT-Procedures AT-Vitals AT-Medications & Blood ED Arrival, Vitals & Labs Procedures Complications Fluids & Blood Products Injury Dx Trauma Scores Non-trauma Pre-existing Conditions Discharge Info, Vitals & Labs Miscellaneous Memo	DoDTR_ID	Nine-digit number that binds all trauma records on a patient for a specific injury event	All	Relevant Value for Field Missing	
2									
3	Memo	Trauma Events Summary	[Trauma Number]	AT-Providers AT-Procedures AT-Vitals AT-Medications & Blood ED Arrival, Vitals & Labs Procedures Complications Fluids & Blood Products Injury Dx Trauma Scores Non-trauma Pre-existing Conditions Discharge Info, Vitals & Labs Miscellaneous Memo	Trauma_Number	Nine-digit record identification number for every record in the DoDTR	All	Relevant Value for Field Missing	
4	Memo	Trauma Events Summary	Facility ID/Name	AT-Providers AT-Procedures AT-Vitals AT-Medications & Blood ED Arrival, Vitals & Labs Procedures Complications Fluids & Blood Products Injury Dx Trauma Scores Non-trauma Pre-existing Conditions Discharge Info, Vitals & Labs Miscellaneous Memo	MTF	Facility for which the trauma record was created	All		
5	Memo	Trauma Events Summary	Facility ID/Name	AT-Providers AT-Procedures AT-Vitals AT-Medications & Blood ED Arrival, Vitals & Labs Procedures Complications Fluids & Blood Products Injury Dx Trauma Scores Non-trauma Pre-existing Conditions Discharge Info, Vitals & Labs Miscellaneous Memo	MTF_DC	Military treatment facility description	All		

## DATA ELEMENTS - Page 2

	A	B	C	D	E	F	G	H	I
1	Registry Tab	Registry Subtab(s)	Data Element	Codebook Tab	Variable Name	Variable Description	Years Available / Began	Value Description/Format	Notes
6	Memo	Trauma Events Summary	Facility Role of Care	AT-Providers AT-Procedures AT-Vitals AT-Medications & Blood ED Arrival, Vitals & Labs Procedures Complications Fluids & Blood Products Injury Dx Trauma Scores Non-trauma Pre-existing Conditions Discharge Info, Vitals & Labs Miscellaneous Memo	MTF_Role	Military treatment facility role of care	All	Air Evacuation - Rotary Wing Aeromedical Evacuation - Fixed Wing CCATT Role 1a Role 1b Role 1c Role 2 Role 3 Role 4 OCONUS Role 4 CONUS	
7	Demographic	Event Summary	Patient Record Type	Demographic & Injury	Patient_Rec_Type	Type of patient record	All	DoDTR Local Trauma Missing	
8	Demographic	Event Summary	[Social Security Number]	Demographic & Injury	SSN	Nine-digit identification number issued by the Federal government to U.S. citizens or nine-digit identification number assigned by the treating facility for non-U.S. patients	All	Relevant Value for Field Missing	For U.S. military/government employee dependents, the sponsor SSN is recorded as the SSN and the dependent SSN is recorded as the Pseudo_SSN
9	Demographic	Event Summary	[Pseudo SSN]	Demographic & Injury	Pseudo_SSN	Facility assigned nine digit identification number	All	Relevant Value for Field Missing	May also be a second SSN annotated for a patient
10	Demographic	Patient Information	Name (Last, First, Middle Initial)	Demographic & Injury	Last_Name	Patient's last name	All	Relevant Value for Field Unknown Missing	
11				Demographic & Injury	First_Name	Patient's first name	All	Relevant Value for Field Unknown Missing	
12				Demographic & Injury	MI	Patient's middle initial	All	Relevant Value for Field Unknown Missing	
13	Demographic	Patient Information	Age	Demographic & Injury	Age	Age of patient in years at time of injury	All	[Range of Values] Missing	
14	Demographic	Patient Information	Alias (Last, First, Middle Initial)	Demographic & Injury	Alias_Last_Name	Alternate last name assigned throughout the continuum of care	All	Relevant Value for Field Unknown Missing	Populated only when name variations are assigned to patient throughout continuum of care
15				Demographic & Injury	Alias_First_Name	Alternate first name assigned throughout the continuum of care	All	Relevant Value for Field Unknown Missing	Populated only when name variations are assigned to patient throughout continuum of care
16				Demographic & Injury	Alias_Middle_Initial	Alternate middle initial assigned throughout the continuum of care	All	Relevant Value for Field Missing	Populated only when name variations are assigned to patient throughout continuum of care
17	Demographic	Patient Information	Date of Birth	Demographic & Injury	Birth_Date	Patient's date of birth	All	DDMMYY Missing	
18	Demographic	Patient Information	Ethnicity	Demographic & Injury	Ethnicity	Patient's ethnicity	All	Afghan Filipino Hispanic Iraqi Other Other Asian/Pacific Islander SE Asian Missing	
19	Demographic	Patient Information	Sex	Demographic & Injury	Sex	Patient's sex	All	Male Female Missing	



# DATA ELEMENTS - Page 4

	A	B	C	D	E	F	G	H	I
1	Registry Tab	Registry Subtab(s)	Data Element	Codebook Tab	Variable Name	Variable Description	Years Available / Began	Value Description/Format	Notes
24	Demographic	Patient Information	Race	Demographic & Injury	Race	Patient's race	All	American Indian or Alaskan Native Asian/Pacific Islander Black White Other Missing	
25	Demographic	Patient Information	Unit	Demographic & Injury	Unit	Deployed military unit the patient was assigned to at time of Injury	All		
26	Injury	Episodic Resuscitation	Total mls 1st 24 Hrs from Injury	Demographics & Injury	TotalFluids_1st24fromInjury	The total number of milliliters (ml) of crystalloids and colloids administered during the first 24 hours from blood 24 hr tracking start date/time.	4/1/2018	[Range of Values] Not Applicable Missing	
27	Injury	Episodic Resuscitation	Total units 1st 24 Hrs from Injury	Demographics & Injury	TotalBlood_1st24fromInjury	The total number of units of blood products administered during the first 24 hours from blood 24 hr tracking start date/time.	4/1/2018	[Range of Values] Not Applicable Missing	
28	Injury	Episodic Resuscitation	Colloids 1st 24 Hrs from Injury	Demographics & Injury	Colloids_1st24fromInjury	The total number of milliliters (ml) of colloids administered during the first 24 hours from blood 24 hr tracking start date/time.	4/1/2018	[Range of Values] Not Applicable Missing	
29	Injury	Episodic Resuscitation	Cryoprecipitates 1st 24 Hrs from Injury	Demographics & Injury	Cryo_1st24fromInjury	The total number of milliliters (ml) of cryoprecipitates administered during the first 24 hours from blood 24 hr tracking start date/time.	4/1/2018	[Range of Values] Not Applicable Missing	
30	Injury	Episodic Resuscitation	Crystalloids 1st 24 Hrs from Injury	Demographics & Injury	Crystalloids_1st24from Injury	The total number of milliliters (ml) of crystalloids administered during the first 24 hours from blood 24 hr tracking start date/time.	4/1/2018	[Range of Values] Not Applicable Missing	
31	Injury	Episodic Resuscitation	Freeze Dried Plasma 1st 24 hrs from Injury	Demographics & Injury	FDP_1st24fromInjury	The total number of units of freeze dried plasma administered during the first 24 hours from blood 24 hr tracking start date/time.	4/1/2018	[Range of Values] Not Applicable Missing	
32	Injury	Episodic Resuscitation	Fresh Frozen Plasma 1st 24 hrs from Injury	Demographics & Injury	FFP_1st24fromInjury	The total number of units of fresh frozen plasma administered during the first 24 hours from blood 24 hr tracking start date/time.	4/1/2018	[Range of Values] Not Applicable Missing	
33	Injury	Episodic Resuscitation	Frozen PRBC's 1st 24 hrs from Injury	Demographics & Injury	FPRBC_1st24fromInjury	The total number of units of frozen PRBC's administered during the first 24 hours from blood 24 hr tracking start date/time	4/1/2018	[Range of Values] Not Applicable Missing	
34	Injury	Episodic Resuscitation	Platelets 1st 24 hrs from Injury	Demographics & Injury	Platelets_1st24from Injury	The total number of units of platelets administered during the first 24 hours from blood 24 hr tracking start date/time.	4/1/2018	[Range of Values] Not Applicable Missing	
35	Injury	Episodic Resuscitation	PRBC's 1st 24 hrs from injury	Demographics & Injury	PRBC_1st24fromInjury	The total number of units of PRBC's administered during the first 24 hours from blood 24 hr tracking start date/time.	4/1/2018	[Range of Values] Not Applicable Missing	
36	Injury	Episodic Resuscitation	Whole Blood 1st 24 hrs from Injury	Demographics & Injury	WB_1st24fromInjury	The total number of units of Whole Blood administered during the first 24 hours from blood 24 hr tracking start date/time.	4/1/2018	[Range of Values] Not Applicable Missing	
37	Injury	Custom	Blood 24 hr Tracking Start Date/Time	Demographics & Injury	Blood24_StartDateTime	Blood Tracking Start Date/Time annotates the start time for the 24 hour Capture window.	4/1/2018	DDMMYY Not Applicable Missing	
38	Injury	Custom	Liquid Plasma 1st 24 hrs from Injury	Demographics & Injury	LP_1st24fromInjury	The total number of units of Liquid Plasma (LP) administered during the first 24 hours from blood 24 hr tracking start date/time	4/1/2018	[Range of Values] Not Applicable Missing	
39	Injury	Custom	LRBC's 1st 24 hrs from Injury	Demographics & Injury	LRBC_1st24fromInjury	The total number of units of leukocyte-reduced red blood cells(LRBC's) administered during the first 24 hours from blood 24 hr tracking start date/time	4/1/2018	[Range of Values] Not Applicable Missing	

## DATA ELEMENTS - Page 5

	A	B	C	D	E	F	G	H	I
1	Registry Tab	Registry Subtab(s)	Data Element	Codebook Tab	Variable Name	Variable Description	Years Available / Began	Value Description/Format	Notes
40	Injury	Custom	LTOWB 1st 24 hrs from Injury	Demographics & Injury	LTOWB_1st24fromInjury	The total number of units of Low Titer O Whole Blood (LTOWB) administered during the first 24 hours from blood 24 hr tracking start date/time.	4/1/2018	[Range of Values] Not Applicable Missing	
41	Injury	Injury	Classification of Injury	Demographic & Injury	Battle_Status	Battle status of injured patient	All	Battle Injury Non-battle Injury Missing	
42	Injury	Injury	COCOM	Demographic & Injury	COCOM	Patient's Command location at the time of injury	6/1/2014		
43	Injury	Injury	Conflict Related	Demographic & Injury	Conflict_Related	Indicates whether injury was sustained in support of military contingency operations	All	No Yes Missing	
44	Injury	Injury	Country	Demographic & Injury	Injury_Country	Country where injury occurred	All		
45	Injury	Injury	ICD-10 Location Code	Demographic & Injury	ICD10_Injury_Loc_Code	ICD-10 code describing location of patient's injury	3/1/2017	Relevant Value for Field Not Applicable Missing	Applicable only when Conflict_Related = 0
46	Injury	Injury	ICD-9 Place of Injury E849	Demographic & Injury	ICD9_Injury_Loc_Code	ICD-9 code describing location of patient's injury	All	Relevant Value for Field Not Applicable Missing	Applicable only when Conflict_Related = 0
47	Injury	Injury	Injury Date/Time	Demographic & Injury	Injury_Date	Date injury occurred	All	DDMMYY Missing	
48				Demographic & Injury	Injury_Time	Time injury occurred	All	HH:MM Missing	
49				Demographic & Injury	Date_Imputed	Indicates whether the injury date was imputed using the admission date for the first role of care	All	No Yes	
50	Injury	Injury	Manner/Intent	Demographic & Injury	Manner	Manner of injury	All	Self-inflicted Other Unintentional Assault/Altercation Missing	
51	Injury	Injury	Mounted	Demographic & Injury	Mounted	Indicates whether a patient was physically located inside or on a vehicle at time of injury	6/1/2014	No Yes Missing	
52	Injury	Injury	Name of Military Operation	Demographic & Injury	Mil_Op	Military operation the patient was assigned to at the time the injury/incident occurred	1/1/2007		Not applicable when Patient_Rec_Type = 2 or Conflict_Related = 0
53	Injury	Injury	Name of Military Operation If Other, Specify	Demographic & Injury	Mil_Op_Other	Free text field describing military operation the patient was assigned to at time of injury	6/1/2014		
54	Injury	Injury	Time Zone	Demographic & Injury	Time_Zone	Time zone of the geographical location where the injury occurred	All	Relevant Value for Field Missing	
55	Injury	Mechanism	Mechanism of Injury	Demographic & Injury	MOI_One	Mechanism of injury	All		Mechanisms of injury are not recorded in any particular order
56	Injury	Mechanism	Mechanism of Injury- If Other, Specify	Demographic & Injury	MOI_ONE_OTHER	Free text field describing MOI1	All		
57	Injury	Mechanism		Demographic & Injury	MOI_ONE_INITIAL	Indicates whether MOI1 is initial cause of injury	1/1/2007		
58	Injury	Mechanism	Mechanism of Injury	Demographic & Injury	MOI_TWO	Mechanism of injury	All		Mechanisms of injury are not recorded in any particular order
59	Injury	Mechanism	Mechanism of Injury- If Other, Specify	Demographic & Injury	MOI_TWO_OTHER	Free text field describing MOI2	All		
60	Injury	Mechanism		Demographic & Injury	MOI_TWO_INITIAL	Indicates whether MOI2 is initial cause of injury	1/1/2007		
61	Injury	Mechanism	Mechanism of Injury	Demographic & Injury	MOI_THREE	Mechanism of injury	All		Mechanisms of injury are not recorded in any particular order

## DATA ELEMENTS - Page 6

	A	B	C	D	E	F	G	H	I
1	Registry Tab	Registry Subtab(s)	Data Element	Codebook Tab	Variable Name	Variable Description	Years Available / Began	Value Description/Format	Notes
62	Injury	Mechanism	Mechanism of Injury- If Other, Specify	Demographic & Injury	MOI_THREE_OTHER	Free text field describing MOI3	All		
63	Injury	Mechanism		Demographic & Injury	MOI_THREE_INITIAL	Indicates whether MOI3 is initial cause of injury	1/1/2007		
64	Injury	Mechanism	Type of Injury	Demographic & Injury	Injury_Type_One	Type of injury	All	Blunt Penetrating Burn Other Missing	Types of injury are not recorded in any particular order
65	Injury	Mechanism		Demographic & Injury	INJURY_TYPE_ONE_DOMINANT	Indicates whether Injury_Type1 is dominant type of injury	All	No Yes	
66	Injury	Mechanism	Type of Injury	Demographic & Injury	Injury_Type_Two	Type of injury	All	Blunt Penetrating Burn Other Missing	Types of injury are not recorded in any particular order
67	Injury	Mechanism		Demographic & Injury	INJURY_TYPE_TWO_DOMINANT	Indicates whether Injury_Type2 is dominant type of injury	All	No Yes	
68	Injury	Mechanism	Type of Injury	Demographic & Injury	Injury_Type_three	Type of injury	All	Blunt Penetrating Burn Other Missing	Types of injury are not recorded in any particular order
69	Injury	Mechanism		Demographic & Injury	INJURY_TYPE_THREE_DOMINANT	Indicates whether Injury_Type3 is dominant type of injury	All	No Yes	
70	Injury			Demographic & Injury	Composite_ISS	The squared sum of the highest three ISS values from three distinct body regions.		[Range of Values] Missing	
71	Arrival Transport	Transport Providers	Arrived at Destination Date/Time	AT-Providers	Destination_Date	Date transport provider arrived at the treatment facility with the patient	1/1/2007	DDMMYY Not Applicable Missing	Applicable only when Care_Loc = 2; may not always apply to casualties transported via CASEVAC (i.e., Transport_Team = 3)
72				AT-Providers	Destination_Time	Time the transport provider arrived at the treatment facility with the patient	1/1/2007	HH:MM Not Applicable Missing	Applicable only when Care_Loc = 2; may not always apply to casualties transported via CASEVAC (i.e., Transport_Team = 3)
73	Arrival Transport	Transport Providers	Arrived at Location Date/Time	AT-Providers	Loc_Arrival_Date	Date the provider arrived at the scene	1/1/2007	DDMMYY Not Applicable Missing	Applicable only when Care_Loc = 2 and Transport_Team ≠ 3
74				AT-Providers	Loc_Arrival_Time	Time the provider arrived at the scene	1/1/2007	HH:MM Not Applicable Missing	Applicable only when Care_Loc = 2 and Transport_Team ≠ 3
75	Arrival Transport	Transport Providers	Arrived at Patient Date/Time	AT-Providers	Patient_Date	Date the provider arrived at the patient	1/1/2007	DDMMYY Not Applicable Missing	Applicable only when Care_Loc = 2 and Transport_Team ≠ 3
76				AT-Providers	Patient_Time	Time the provider arrived at the patient	1/1/2007	HH:MM Not Applicable Missing	Applicable only when Care_Loc = 2 and Transport_Team ≠ 3
77	Arrival Transport	Transport Providers	Call Dispatched Date/Time	AT-Providers	Dispatch_Date	Date the ambulance or helicopter crew was alerted	1/1/2007	DDMMYY Not Applicable Missing	Applicable only when Care_Loc = 2 and Transport_Team ≠ 3
78				AT-Providers	Dispatch_Time	Time the ambulance or helicopter crew was alerted	1/1/2007	HH:MM Not Applicable Missing	Applicable only when Care_Loc = 2 and Transport_Team ≠ 3
79	Arrival Transport	Transport Providers	Call Received Date/Time	AT-Providers	Received_Date	Date the request for transport was received	1/1/2007	DDMMYY Not Applicable Missing	Applicable only when Care_Loc = 2 and Transport_Team ≠ 3



## DATA ELEMENTS - Page 7

	A	B	C	D	E	F	G	H	I
1	Registry Tab	Registry Subtab(s)	Data Element	Codebook Tab	Variable Name	Variable Description	Years Available / Began	Value Description/Format	Notes
80				AT-Providers	Received_Time	Time the request for transport was received	1/1/2007	HH:MM Not Applicable Missing	Applicable only when Care_Loc = 2 and Transport_Team ≠ 3
81	Arrival Transport	Transport Providers	Care Location	AT-Providers	Care_Loc	Identifies whether patient received care at point of injury, role 1 MTF, or during transport	6/1/2014	Point of Injury Transport Troop Medical Clinic/Battalion Aid Station Unknown Missing	
82	Arrival Transport	Transport Providers	En Route Date/Time	AT-Providers	EnRoute_Date	Date the ambulance or helicopter crew departed for the scene	1/1/2007	DDMMYY Not Applicable Missing	Applicable only when Care_Loc = 2 and Transport_Team ≠ 3
83				AT-Providers	EnRoute_Time	Time the ambulance or helicopter crew departed for the scene	1/1/2007	HH:MM Not Applicable Missing	Applicable only when Care_Loc = 2 and Transport_Team ≠ 3
84	Arrival Transport	Transport Providers	Left Location Date/Time	AT-Providers	Loc_Depart_Date	Date the crew and patient departed from the scene	1/1/2007	DDMMYY Not Applicable Missing	Applicable only when Care_Loc = 2; may not always apply to casualties transported via CASEVAC (i.e., Transport_Team = 3)
85				AT-Providers	Loc_Depart_Time	Time the crew and patient departed from the scene	1/1/2007	HH:MM Not Applicable Missing	Applicable only when Care_Loc = 2; may not always apply to casualties transported via CASEVAC (i.e., Transport_Team = 3)
86	Arrival Transport	Transport Providers	Prehospital Facility	AT-Providers	Prehosp_Facility	Prehospital facility/provider that rendered care	1/1/2007	Combat Medic/Combat Life Saver Battalion Aid Station Troop Medical Clinic Prison or Detainee Camp Buddy Aid/Embedded Unit Medic Not Applicable Missing	Applicable only when Care_Loc = 1 or 3
87	Arrival Transport	Transport Providers	Provider Job Function	AT-Providers	Provider_Job	Job function of provider	6/1/2014	Medical Non-medical Not Applicable Missing	Applicable only when Care_Loc = 2
88	Arrival Transport	Transport Providers	Provider Role	AT-Providers	Provider_Role	Role of individual provider	6/1/2014	EMT-Basic EMT-Intermediate EMT-Paramedic Licensed Practical Nurse Physician Non-medical Registered Nurse-Nurse Practitioner Physician Assistant Registered Nurse-Critical Care Non-ECCN Registered Nurse-ECCN Registered Nurse-Non-critical Care Registered Nurse-CRNA Respiratory Therapist Other Not Applicable Missing	Applicable only when Care_Loc = 2
89	Arrival Transport	Transport Providers	Provider Role If Other	AT-Providers	Provider_Role_Other	Free text field describing role of individual provider	6/1/2014	Relevant Value for Field Not Applicable Missing	Applicable only when Care_Loc = 2 and Provider_Role = 99
90	Arrival Transport	Transport Providers	Transport Leg Number	AT-Providers	Transport_Leg	Transport leg number to an individual facility	6/1/2014	[Range of Values] Not Applicable Missing	Applicable only when Care_Loc = 2; leg number count restarts with each new interfacility transport

## DATA ELEMENTS - Page 8

	A	B	C	D	E	F	G	H	I
1	Registry Tab	Registry Subtab(s)	Data Element	Codebook Tab	Variable Name	Variable Description	Years Available / Began	Value Description/Format	Notes
91	Arrival Transport	Transport Providers	Transport Mode	AT-Providers	Transport_Mode	Mode of patient transport	6/1/2014	Air Ground Sea Not Applicable Missing	Applicable only when Care_Loc = 2
92	Arrival Transport	Transport Providers	Transport Platform	AT-Providers	Transport_Platform	Vehicle platform used to transport patient	6/1/2014	Code Values and Descriptions Available Only Upon Special Approval	Applicable only when Care_Loc = 2
93	Arrival Transport	Transport Providers	Transport Platform If Other	AT-Providers	Transport_Platform_Other	Free text field describing vehicle platform used to transport patient	6/1/2014	Code Values and Descriptions Available Only Upon Special Approval	Applicable only when Care_Loc = 2 and Transport_Platform = 11, 27, 29, 41, 50 or 52
94	Arrival Transport	Transport Providers	Transport Stage	AT-Providers	Transport_Stage	Stage of patient transport	6/1/2014	Intertheater Transport Intratheater Transport Transport from Scene Not Applicable Missing	Applicable only when Care_Loc = 2
95	Arrival Transport	Transport Providers	Transport Team	AT-Providers	Transport_Team	Team providing care during transport of patient	6/1/2014	Aeromedical Evacuation Acute Lung Rescue Team CASEVAC CCAST CCATT Civilian Fever Team MEDEVAC/Dustoff Standard MEDEVAC/Dustoff Blood Capable MERT NICU Transport Team Other PEDRO TC CET Burn Team Not Applicable Missing	Applicable only when Care_Loc = 2
96	Arrival Transport	Transport Providers	Transport Team If Other	AT-Providers	Transport_Team_Other	Free text field describing team providing care during transport	6/1/2014	Relevant Value for Field Not Applicable Missing	Applicable only when Care_Loc = 2 and Transport_Team = 12
97	Arrival Transport	Transport Providers	Transport Type	AT-Providers	Transport_Type	Generic type of vehicle used to transport patient	6/1/2014	Fixed Wing Rotary Wing Tilt Rotor Assault Medical Other Ship Not Applicable Missing	Applicable only when Care_Loc = 2
98	Arrival Transport	Procedures	Anatomic Region	AT-Procedures	Procedure_BR	Body region on which the medical procedure was performed	6/1/2014	Abdomen/Pelvis Cardiac Cervical Spine Chest Extremity - Lower Left Extremity - Lower Right Extremity - Upper Left Extremity - Upper Right Facial Head Neck Thoracic/Lumbar Spine Not Applicable Missing	Procedure = 17, 27, 28, 29, 30, 41, 49, 59, 60, 61, 62, 63, 64, or 65

## DATA ELEMENTS - Page 9

	A	B	C	D	E	F	G	H	I
1	Registry Tab	Registry Subtab(s)	Data Element	Codebook Tab	Variable Name	Variable Description	Years Available / Began	Value Description/Format	Notes
99	Arrival Transport	Procedures	Care Location	AT-Procedures	Care_Loc	Identifies whether patient received care at point of injury, role 1 MTF, or during transport	6/1/2014	Point of Injury Transport Troop Medical Clinic/Battalion Aid Station Unknown Missing	
100	Arrival Transport	Procedures	Effective?	AT-Procedures	Effective	Indicates whether treatment was effective	6/1/2014	No Yes Not Applicable Missing	Applicable only when Procedure = 7, 17, 27, 28, 29, 30, 41, 49, 59, 60, 61, 62, 63, 64, or 65
101	Arrival Transport	Procedures	Procedures	AT-Procedures	PH_Procedure	Identifies specific procedures performed at the point of injury, role 1 MTFs, or during transport	6/1/2014	None Warming - Bair Hugger Warming - Blanket Warming - Body Bag Stabilization - C-Collar Circulation - Central Line Airway - Cricothyrotomy Circulation - CPR Circulation - Thoracotomy Wound - Unknown Hemostatic Wound - Quick Clot® Hemostatic Wound - Chitosan® Hemostatic Wound - Other Hemostatic Wound - Direct Pressure Wound - Field Dressing Warming - HPMK Circulation - Intraosseous Other Airway - Intubated Circulation - IV Fluids Circulation - MAST-Inflated Ventilation - Needle Decompression Ventilation - O2 Circulation - Pericardiocentesis Circulation - Peripheral IV Warming - Radiant Warming Warming - Space Blanket Tourniquet - Extremity CAT Tourniquet - Extremity SOFTT Tourniquet - Extremity Type	

# DATA ELEMENTS-Page 10

	A	B	C	D	E	F	G	H	I
1	Registry Tab	Registry Subtab(s)	Data Element	Codebook Tab	Variable Name	Variable Description	Years Available / Began	Value Description/Format	Notes
102								Unknown Tourniquet - Extremity Other Ventilation - Tube Thoracostomy/Chest Tube Circulation - Vasopressor Infused Circulation - Venous Cutdown Warming - Warm Fluids Warming - IV Bag Warmer Wound - Eye Shield Stabilization - Pelvic Binder Stabilization - Extremity Splints Airway - King Airway Tourniquet - Junctional CROC Airway - Laryngeal Mask Airway Airway - Combitube Circulation - ECMO Cranial - ICP Monitoring Pain - Epidural Management Pain - Nerve Block Management Stabilization - Vacuum Spine Board Tourniquet - Extremity Pneumatic Ventilation - Ventilator Management Warming - Chemical Blanket Wound - Chest Seal Dressing Wound - Hemostatic Combat Gauze Wound - Dakin's Dressing Wound - Pressure Dressing Wound - Wound Vac Management Airway - Adjunct Wound - Occlusive Dressing Circulation - Intraosseous EZ Circulation - Intraosseous FAST Tourniquet - Junctional Abdominal Aortic Tourniquet - Junctional JETT Tourniquet - Junctional Other Tourniquet - Junctional SAM Tourniquet - Junctional Type Unknown Other	
103									
104	Arrival Transport	Procedures	Procedure If Other	AT-Procedures	PH_Procedure_Other	Free text field describing procedure performed at the point of injury, role 1 MTFs, or during transport	6/1/2014	Relevant Value for Field Not Applicable Missing	Applicable only when Procedure = 13, 17, 30, 63, or 99
105	Arrival Transport	Procedures	Transport Leg Number	AT-Procedures	Transport_Leg	Transport leg number to an individual facility	6/1/2014	[Range of Values] Not Applicable Missing	Applicable only when Care_Loc = 2; leg number count restarts with each new interfacility transport
106	Arrival Transport	Procedures	Tourniquet Time in Minutes	AT-Procedures	Tourniquet_Time	Number of minutes the tourniquet was in place	All	[Range of Values] Not Applicable Missing	Applicable only when Procedure = 27, 28, 29, 30, 41, 49, 61, 62, 63, 64, or 65
107	Arrival Transport	Vitals	[RTS]	AT-Vitals	RTS	Revised trauma score calculated using the patient's GCS, systolic blood pressure and respiratory rate	1/1/2007	[Range of Values] Not Applicable Missing	Applicable only when Resp_Assist = 0
108	Arrival Transport	Vitals	Care Location	AT-Vitals	Care_Loc	Identifies whether patient received care at point of injury, role 1 MTF, or during transport	6/1/2014	Point of Injury Transport Troop Medical Clinic/Battalion Aid Station Unknown Missing	

## DATA ELEMENTS - Page 11

	A	B	C	D	E	F	G	H	I
1	Registry Tab	Registry Subtab(s)	Data Element	Codebook Tab	Variable Name	Variable Description	Years Available / Began	Value Description/Format	Notes
109	Arrival Transport	Vitals	GCS Eye	AT-Vitals	GCS_Eye	Glasgow Coma Scale score for responsiveness of patient's eyes	1/1/2007	None To Pain To Voice Spontaneous Not Applicable Missing	
110	Arrival Transport	Vitals	GCS Motor	AT-Vitals	GCS_Motor	Glasgow Coma Scale score for patient's motor activities	1/1/2007	None Abnormal Extension Abnormal Flexion Withdraws to Pain Localizes Pain Obeyes Commands Not Applicable Missing	
111	Arrival Transport	Vitals	GCS Total	AT-Vitals	GCS_Total	Patient's total Glasgow Coma Scale score as calculated from the Eye, Verbal and Motor scores	1/1/2007	[Range of Values] Not Applicable Missing	
112	Arrival Transport	Vitals	GCS Verbal	AT-Vitals	GCS_Verbal	Glasgow Coma Scale score for patient's verbal abilities	1/1/2007	None Incomprehensible Sounds Inappropriate Words Confused Oriented Not Applicable Missing	
113	Arrival Transport	Vitals	Initial Vitals	AT-Vitals	Initial_Vitals	Indicates whether prehospital vitals recorded were the initial set of vitals taken at the scene or first set captured in flight	1/1/2007	No Yes Not Applicable Missing	
114	Arrival Transport	Vitals	Intubated	AT-Vitals	Intubated	Indicates whether patient was intubated at the time vitals were taken	1/1/2007	No Yes Not Applicable Missing	
115	Arrival Transport	Vitals	Intubated- If Yes, Method	AT-Vitals	Intubated_Method	Specific method of intubation	1/1/2007	Combitube Esophageal Obturator Airway ETT - Route Not Specified Laryngeal Mask Airway Nasotracheal Needle Cricothyrotomy Orotacheal Surgical Cricothyrotomy Tracheostomy Unintentional Esophageal Intubation Not Applicable Missing	Applicable only when Intubated = 1
116	Arrival Transport	Vitals	Pain Scale	AT-Vitals	Pain_Scale	Numeric value indicating the patient's pain level	1/1/2007	[Range of Values] Not Applicable Missing	Applicable only when Pain = 1
117	Arrival Transport	Vitals	Pain	AT-Vitals	Pain	Indicates whether patient was experiencing pain at the time vitals were taken	6/1/2014	No Yes Not Applicable Missing	
118	Arrival Transport	Vitals	Paralytic Agents	AT-Vitals	Paralytic_Agents	Indicates whether patient was medically or chemically paralyzed at the time vitals were taken	1/1/2007	No Yes Not Applicable Missing	

## DATA ELEMENTS - Page 12

	A	B	C	D	E	F	G	H	I
1	Registry Tab	Registry Subtab(s)	Data Element	Codebook Tab	Variable Name	Variable Description	Years Available / Began	Value Description/Format	Notes
119	Arrival Transport	Vitals	Pulse Quality	AT-Vitals	Pulse_Quality	Patient's strongest pulse quality	1/1/2007	Strong Weak Doppler Absent Not Applicable Missing	
120	Arrival Transport	Vitals	Pulse Rate	AT-Vitals	Pulse_Rate	Patient's unassisted pulse rate in beats/minute	1/1/2007	[Range of Values] Not Applicable Missing	
121	Arrival Transport	Vitals	Recorded Date/Time	AT-Vitals	Vitals_Date	Date when the patient's vitals were taken	1/1/2007	DDMMYY Not Applicable Missing	
122				AT-Vitals	Vitals_Time	Time when patient's vitals were taken	1/1/2007	HH:MM Not Applicable Missing	
123	Arrival Transport	Vitals	Respiration Assisted	AT-Vitals	Resp_Assist	Indicates whether patient's respiration was assisted at the time vitals were taken	1/1/2007	No Yes Not Applicable Missing	
124	Arrival Transport	Vitals	Respiration Assisted- If Yes, Type	AT-Vitals	Resp_Assist_Type	Type of respiratory support provided to the patient	1/1/2007	Bag-Valve-Mask Ventilator Not Applicable Missing	Applicable only when Resp_Assist = 1
125	Arrival Transport	Vitals	Respiratory Rate	AT-Vitals	Resp_Rate	Patient's respiratory rate	1/1/2007	[Range of Values] Not Applicable Missing	
126	Arrival Transport	Vitals	SaO2	AT-Vitals	SaO2	Patient's percent oxygen saturation	1/1/2007	[Range of Values] Not Applicable Missing	
127	Arrival Transport	Vitals	SBP/DBP	AT-Vitals	SBP	Patient's unassisted systolic blood pressure	1/1/2007	[Range of Values] Not Applicable Missing	
128				AT-Vitals	DBP	Patient's unassisted diastolic blood pressure in mmHg	1/1/2007	[Range of Values] Not Applicable Missing	
129	Arrival Transport	Vitals	Sedated	AT-Vitals	Sedated	Indicates whether patient was sedated at the time vitals were taken	1/1/2007	No Yes Not Applicable Missing	
130	Arrival Transport	Vitals	Temperature	AT-Vitals	Temp	Patient's temperature in °F	1/1/2007	[Range of Values] Not Applicable Missing	
131	Arrival Transport	Vitals	Temperature Route	AT-Vitals	Temp_Route	Route used to obtain patient's temperature	1/1/2007	Axillary Foley Oral Rectal Transtemporal Tympanic Other Dermal Not Applicable Missing	
132	Arrival Transport	Vitals	Transport Leg Number	AT-Vitals	Transport_Leg	Transport leg number to an individual facility	6/1/2014	[Range of Values] Not Applicable Missing	Applicable only when Care_Loc = 2; leg number count restarts with each new interfacility transport





## DATA ELEMENTS - Page 14

	A	B	C	D	E	F	G	H	I
1	Registry Tab	Registry Subtab(s)	Data Element	Codebook Tab	Variable Name	Variable Description	Years Available / Began	Value Description/Format	Notes
138								Naproxen (Naprosyn) Oxycodone (Percocet) Promethazine (Phenegran) Tramadol (Ultram) Haloperidol (Haldol) Blood - Freeze Dried Plasma Fluids - Crystalloids Fluids - Hextend Combat Pill Pack TXA Blood - PRBC Blood - FFP Blood - Whole Blood Blood - Platelets Blood - Cryoprecipitate Fluids - Colloids Other	
139	Arrival Transport	Medications	Medication Given- Specify If Other/ (Medication Given) If Other	AT-Medications & Blood	MedBlood_Other	Free text field describing medication or blood product administered	1/1/2007	Relevant Value for Field Not Applicable Missing	Applicable only when MedBlood = 99
140	Arrival Transport	Medications	Medication Route	AT-Medications & Blood	MedBlood_Route	Route which medication or blood product was administered	10/1/2011	Intramuscular Intravenous Inhalant Oral Other Subcutaneous Transdermal Intraosseous Missing	
141	Arrival Transport	Medications/Blood Products	Transport Leg Number	AT-Medications & Blood	Transport_Leg	Transport leg number to an individual facility	6/1/2014	[Range of Values] Not Applicable Missing	Applicable only when Care_Loc = 2; leg number count restarts with each new interfacility transport
142	ED	Arrival/Admission	ED Departure Date/Time	ED Arrival, Vitals & Labs	Departure_Date	Date the patient departed the emergency department	1/1/2007	DDMMYY Not Applicable Missing	Not applicable to casualties directly admitted to med/surgical, ICU, OR or morgue (i.e., not seen in the ED)
143				ED Arrival, Vitals & Labs	Departure_Time	Time the patient departed the emergency department	1/1/2007	HH:MM Not Applicable Missing	Not applicable to casualties directly admitted to med/surgical, ICU, OR or morgue (i.e., not seen in the ED)
144	ED	Arrival/Admission	Facility Arrival Date/Time	ED Arrival, Vitals & Labs	Arrival_Date	Date the patient arrived at the treatment facility	All	DDMMYY Missing	
145				ED Arrival, Vitals & Labs	Arrival_Time	Time the patient arrived at the treatment facility	All	HH:MM Missing	
146	ED	Arrival/Admission	Initial Status	ED Arrival, Vitals & Labs	Initial_Vital_Status	Patient's vital status upon arrival at the treatment facility	All	Alive Dead on Arrival Killed in Action Missing	See additional documentation for definitions of DOA and KIA
147	ED	Arrival Admission	MTF Transferred From	ED Arrival, Vitals & Labs	Transferred_From	Treatment facility from which the patient was transferred	All	Code Values and Descriptions Available Only Upon Special Approval	

## DATA ELEMENTS - Page 15

	A	B	C	D	E	F	G	H	I
1	Registry Tab	Registry Subtab(s)	Data Element	Codebook Tab	Variable Name	Variable Description	Years Available / Began	Value Description/Format	Notes
148	ED	Arrival/Admission	Post ED Disposition	ED Arrival, Vitals & Labs	Post_ED_Dept	Facility department or location to which the patient was transferred to from the emergency department	All	Angiography Burn Unit (Same Facility) Discharged ICU/Critical Care Unit Labor & Delivery Med/Surgical Unit Morgue Operating Room Prison Ward (Same Facility) Special Procedure Unit Step Down Unit Transfer From Facility Missing	
149	ED	Arrival/Admission	Time Zone	ED Arrival, Vitals & Labs	ED_Time_Zone	Time zone where the treatment facility is located	10/1/2011	Relevant Value for Field Missing	
150	ED	Arrival/Admission	Triage Category	ED Arrival, Vitals & Labs	Triage_Cat	Triage level patient was assigned upon arrival to the emergency department	All	Delayed Expectant Immediate Minimal Not Applicable Missing	Not applicable to casualties directly admitted to med/surgical, ICU, OR or morgue (i.e., not seen in the ED)
151	ED	Arrival/Admission	Was this a Mass Casualty?	ED Arrival, Vitals & Labs	Mass_Casualty	Indicates whether patient was part of a mass casualty event	6/1/2014	No Yes Missing	
152	ED	Arrival Admission	Was this a Transfer Patient	ED Arrival, Vitals & Labs	Transfer	Indicates whether patient was transferred from another treatment facility	10/1/2011	No Yes Missing	
153	ED	Initial Vitals	[RTS]	ED Arrival, Vitals & Labs	RTS	Revised trauma score calculated using the patient's GCS, systolic blood pressure and respiratory rate data	All	[Range of Values] Not Applicable Missing	Applicable only when Resp_Assist = 0 and Vital_Status = 1
154	ED	Initial Vitals	BG- ABG's/VBG's Drawn	ED Arrival, Vitals & Labs	ABG	Indicates whether patient's arterial blood gas was drawn	1/1/2007	No Yes Not Applicable Missing	Applicable only when Vital_Status = 1
155				ED Arrival, Vitals & Labs	VBG	Indicates whether patient's venous blood gas was drawn	1/1/2007	No Yes Not Applicable Missing	Applicable only when Vital_Status = 1
156	ED	Initial Vitals	BG- Base Deficit/Excess	ED Arrival, Vitals & Labs	Base_Deficit	Patient's base deficit/excess in mEq/L	1/1/2007	[Range of Values] Not Applicable Missing	Applicable only when Vital_Status = 1
157	ED	Initial Vitals	BG- PaCO2	ED Arrival, Vitals & Labs	PaCO2	Patient's partial pressure of carbon dioxide in mmHg	1/1/2007	[Range of Values] Not Applicable Missing	Applicable only when Vital_Status = 1
158	ED	Initial Vitals	BG- PaO2	ED Arrival, Vitals & Labs	PaO2	Patient's partial pressure of oxygen in mmHg	1/1/2007	[Range of Values] Not Applicable Missing	Applicable only when Vital_Status = 1
159	ED	Initial Vitals	BG- pH	ED Arrival, Vitals & Labs	Blood_pH	pH of patient's arterial blood sample	1/1/2007	[Range of Values] Not Applicable Missing	Applicable only when Vital_Status = 1
160	ED	Initial Vitals	GCS Eye	ED Arrival, Vitals & Labs	GCS_Eye	Glasgow Coma Scale score for responsiveness of patient's eyes	All	None To Pain To Voice Spontaneous Not Applicable Missing	Applicable only when Vital_Status = 1

## DATA ELEMENTS - Page 16

	A	B	C	D	E	F	G	H	I
1	Registry Tab	Registry Subtab(s)	Data Element	Codebook Tab	Variable Name	Variable Description	Years Available / Began	Value Description/Format	Notes
161	ED	Initial Vitals	GCS Motor	ED Arrival, Vitals & Labs	GCS_Motor	Glasgow Coma Scale score for patient's motor activities	All	None Abnormal Extension Abnormal Flexion Withdraws to Pain Localizes Pain Obeyes Commands Not Applicable Missing	Applicable only when Vital_Status = 1
162	ED	Initial Vitals	GCS Total	ED Arrival, Vitals & Labs	GCS_Total	Patient's total Glasgow Coma Scale score as calculated from the Eye, Verbal and Motor scores	All	[Range of Values] Not Applicable Missing	Applicable only when Vital_Status = 1
163	ED	Initial Vitals	GCS Verbal	ED Arrival, Vitals & Labs	GCS_Verbal	Glasgow Coma Scale score for patient's verbal abilities	All	None Incomprehensible Sounds Inappropriate Words Confused Oriented Not Applicable Missing	Applicable only when Vital_Status = 1
164	ED	Initial Vitals	Hct	ED Arrival, Vitals & Labs	Hct	Patient's hematocrit concentration	1/1/2007	[Range of Values] Not Applicable Missing	Applicable only when Vital_Status = 1
165	ED	Initial Vitals	Height	ED Arrival, Vitals & Labs	Height	Patient's height in inches at time of admission	1/1/2007	[Range of Values] Not Applicable Missing	Applicable only when Vital_Status = 1
166	ED	Initial Vitals	Hgb	ED Arrival, Vitals & Labs	Hgb	Patient's hemoglobin concentration in g/dL	10/1/2011	[Range of Values] Not Applicable Missing	Applicable only when Vital_Status = 1
167	ED	Initial Vitals	INR	ED Arrival, Vitals & Labs	INR	Patient's international normalized ratio	1/1/2007	[Range of Values] Not Applicable Missing	Applicable only when Vital_Status = 1
168	ED	Initial Vitals	Intubated	ED Arrival, Vitals & Labs	Intubated	Indicates whether patient was intubated at the time vitals were taken	1/1/2007	No Yes Not Applicable Missing	Applicable only when Vital_Status = 1
169	ED	Initial Vitals	Intubated- If Yes, Method	ED Arrival, Vitals & Labs	Intubated_Method	Specific method of intubation	1/1/2007	Combitube Esophageal Obturator Airway ETT - Route Not Specified Laryngeal Mask Airway Nasotracheal Needle Cricothyrotomy Orotracheal Surgical Cricothyrotomy Tracheostomy Unintentional Esophageal Intubation Not Applicable Missing	Applicable only when Vital_Status = 1 and Intubated = 1
170	ED	Initial Vitals	Pain Scale	ED Arrival, Vitals & Labs	Pain_Scale	Numeric value indicating the patient's pain level	1/1/2007	[Range of Values] Not Applicable Missing	Applicable only when Vital_Status = 1 and when Pain = 1
171	ED	Initial Vitals	Pain?	ED Arrival, Vitals & Labs	Pain	Indicates whether patient was experiencing pain at the time vitals were taken	6/1/2014	No Yes Not Applicable Missing	Applicable only when Vital_Status = 1
172	ED	Initial Vitals	Paralytic Agents	ED Arrival, Vitals & Labs	Paralytic_Agents	Indicates whether patient was medically or chemically paralyzed at the time vitals were taken	1/1/2007	No Yes Not Applicable Missing	Applicable only when Vital_Status = 1
173	ED	Initial Vitals	Platelet Count	ED Arrival, Vitals & Labs	Platelet_Count	Patient's platelet count x 10 <sup>9</sup> /L	1/1/2007	[Range of Values] Not Applicable Missing	Applicable only when Vital_Status = 1

## DATA ELEMENTS - Page 17

	A	B	C	D	E	F	G	H	I
1	Registry Tab	Registry Subtab(s)	Data Element	Codebook Tab	Variable Name	Variable Description	Years Available / Began	Value Description/Format	Notes
174	ED	Initial Vitals	Pulse Quality	ED Arrival, Vitals & Labs	Pulse_Quality	Patient's strongest pulse quality	1/1/2007	Strong Weak Doppler Absent Not Applicable Missing	Applicable only when Vital_Status = 1
175	ED	Initial Vitals	Pulse Rate	ED Arrival, Vitals & Labs	Pulse_Rate	Patient's unassisted pulse rate in beats/minute	All	[Range of Values] Not Applicable Missing	Applicable only when Vital_Status = 1
176	ED	Initial Vitals	Respiration Assisted	ED Arrival, Vitals & Labs	Resp_Assist	Indicates whether patient's respiration was assisted at the time vitals were taken	1/1/2007	No Yes Not Applicable Missing	Applicable only when Vital_Status = 1
177	ED	Initial Vitals	Respiration Assisted- If Yes, Type	ED Arrival, Vitals & Labs	Resp_Assist_Type	Type of respiratory support provided to the patient	1/1/2007	Bag-Valve-Mask Ventilator Not Applicable Missing	Applicable only when Vital_Status = 1 and Resp_Assist = 1
178	ED	Initial Vitals	Recorded Date/Time	ED Arrival, Vitals & Labs	Vitals_Date	Date when the patient's vitals were taken	10/1/2011	DDMMYY Not Applicable Missing	Applicable only when Vital_Status = 1
179				ED Arrival, Vitals & Labs	Vitals_Time	Time when patient's vitals were taken	10/1/2011	HH:MM Not Applicable Missing	Applicable only when Vital_Status = 1
180	ED	Initial Vitals	Respiratory Rate	ED Arrival, Vitals & Labs	Resp_Rate	Patient's respiratory rate in breaths/minute	All	[Range of Values] Not Applicable Missing	Applicable only when Vital_Status = 1
181	ED	Initial Vitals	SaO2	ED Arrival, Vitals & Labs	SaO2	Patient's percent oxygen saturation	1/1/2007	[Range of Values] Not Applicable Missing	Applicable only when Vital_Status = 1
182	ED	Initial Vitals	SBP/DBP	ED Arrival, Vitals & Labs	SBP	Patient's unassisted systolic blood pressure in mmHg	All	[Range of Values] Not Applicable Missing	Applicable only when Vital_Status = 1
183				ED Arrival, Vitals & Labs	DBP	Patient's unassisted diastolic blood pressure in mmHg	All	[Range of Values] Not Applicable Missing	Applicable only when Vital_Status = 1
184	ED	Initial Vitals	Sedated?	ED Arrival, Vitals & Labs	Sedated	Indicates whether patient was sedated at the time vitals were taken	1/1/2007	No Yes Not Applicable Missing	Applicable only when Vital_Status = 1
185	ED	Initial Vitals	Temperature	ED Arrival, Vitals & Labs	Temp	Patient's temperature in °F	All	[Range of Values] Not Applicable Missing	Applicable only when Vital_Status = 1
186	ED	Initial Vitals	Temperature Route	ED Arrival, Vitals & Labs	Temp_Route	Route used to obtain patient's temperature	All	Axillary Foley Oral Rectal Transtemporal Tympanic Other Dermal Not Applicable Missing	Applicable only when Vital_Status = 1
187	ED	Initial Vitals	Weight	ED Arrival, Vitals & Labs	Weight	Patient's weight in pounds at time of admission	1/1/2007	[Range of Values] Not Applicable Missing	Applicable only when Vital_Status = 1
188	Dx	Injury Narrative	Injury Narrative	ED Arrival, Vitals & Labs	Injury_Narrative	Detailed description of the circumstances regarding how the injury occurred	All	Code Values and Descriptions Available Only Upon Special Approval	

## DATA ELEMENTS - Page 18

	A	B	C	D	E	F	G	H	I
1	Registry Tab	Registry Subtab(s)	Data Element	Codebook Tab	Variable Name	Variable Description	Years Available / Began	Value Description/Format	Notes
189	Procedures	Procedures at this Facility	ICD-10 Procedure Code	Procedures	ICD_Code	ICD-9 or ICD-10 procedure code	ICD-9: 1/1/2002-2/28/2017 ICD-10: 3/1/2017	Relevant Value for Field Missing	
190	Procedures	Procedures at this Facility	ICD-10 Procedure Code ICD-9 Procedure Code ICD-9	Procedures	Code_Desc	Text description of ICD-9/ICD-10 procedure code	All	Relevant Value for Field Missing	
191	Procedures	Procedures at this Facility	Location	Procedures	Proc_Department	Facility unit or department where the procedure was performed	1/1/2007	Angiography Burn Unit (Same Facility) Emergency Department ICU/Critical Care Unit Labor & Delivery Med/Surgical Unit Minor Surgery Unit Nuclear Medicine Operating Room Post-operative Anesthesia Care Unit Physical Medicine Rehabilitation Prison Ward (Same Facility) Radiology Special Procedure Unit Step Down Unit Other Missing	
192	Procedures	Procedures at this Facility	Location If Other	Procedures	Proc_Department_Other	Free text field describing facility unit or department where the procedure was performed	6/1/2014	Relevant Value for Field Not Applicable Missing	Applicable only when Department = 99
193	Procedures	Procedures at this Facility	Procedure Narrative	Procedures	Procedure_Narrative	Free text field describing any additional notes about procedure	6/1/2014	Relevant Value for Field Missing	
194	Procedures	Procedures at this Facility	Warming Devices	Miscellaneous	Ambient_Temp	Indicates whether ambient room temperature (85° F) was used to supplement body temperature throughout patient's stay at the treatment facility	6/1/2014	No Yes Missing	Prior to 6/1/2014, use of warming devices was captured with ICD-9 procedure code 93.35
195	Procedures	Procedures at this Facility	Warming Devices	Miscellaneous	Bair_Hugger	Indicates whether Bair hugger was used to supplement body temperature throughout patient's stay at the treatment facility	6/1/2014	No Yes Missing	Prior to 6/1/2014, use of warming devices was captured with ICD-9 procedure code 93.35
196	Procedures	Procedures at this Facility	Warming Devices	Miscellaneous	Rapid_Infuser	Indicates whether a rapid infuser was used to supplement body temperature throughout patient's stay at the treatment facility	6/1/2014	No Yes Missing	Prior to 6/1/2014, use of warming devices was captured with ICD-9 procedure code 93.35
197	Procedures	Procedures at this Facility	Warming Devices	Miscellaneous	Warm_Blankets	Indicates whether warm blankets were used to supplement body temperature throughout patient's stay at the treatment facility	6/1/2014	No Yes Missing	Prior to 6/1/2014, use of warming devices was captured with ICD-9 procedure code 93.35
198	Procedures	Procedures at this Facility	Warming Devices	Miscellaneous	Warm_IV	Indicates whether warm IV fluids were used to supplement body temperature throughout patient's stay at the treatment facility	6/1/2014	No Yes Missing	Prior to 6/1/2014, use of warming devices was captured with ICD-9 procedure code 93.35
199	Procedures	Procedures at this Facility	Warming Devices	Miscellaneous	Warming_Lights	Indicates whether warming lights were used to supplement body temperature throughout patient's stay at the treatment facility	6/1/2014	No Yes Missing	Prior to 6/1/2014, use of warming devices was captured with ICD-9 procedure code 93.35
200	Procedures	Procedures at this Facility	Warming Devices	Miscellaneous	HPMK	Indicates whether a hypothermia prevention and management kit was used to supplement body temperature throughout patient's stay at the treatment facility	6/1/2014	No Yes Missing	Prior to 6/1/2014, use of warming devices was captured with ICD-9 procedure code 93.35



## DATA ELEMENTS - Page 19

	A	B	C	D	E	F	G	H	I
1	Registry Tab	Registry Subtab(s)	Data Element	Codebook Tab	Variable Name	Variable Description	Years Available / Began	Value Description/Format	Notes
201	Procedures	Procedures at this Facility	Warming Devices	Miscellaneous	Chemical_Blanket	Indicates whether a chemical blanket was used to supplement body temperature throughout patient's stay at the treatment facility	6/1/2014	No Yes Missing	Prior to 6/1/2014, use of warming devices was captured with ICD-9 procedure code 93.35
202	Procedures	Procedures at this Facility	Wound Care	Miscellaneous	Dakin_Dressing	Indicates whether Dakin's dressing was used for wound care at the treatment facility	1/19/2017	No Yes Missing	Prior to 1/19/2017, use of Dakin's dressing was captured with ICD-9 procedure code 99.22
203	Procedures	Procedures at this Facility	Wound Care	Miscellaneous	Wound_Vac	Indicates whether V.A.C.® Therapy was used for wound care at the treatment facility	1/19/2017	No Yes Missing	Prior to 1/19/2017, use of V.A.C.® Therapy was captured with ICD-9 procedure code 86.28
204	Dx	Injury Narrative	Open Abdomen on Arrival	Miscellaneous	Abd_Arrival	Indicates whether the patient had a surgically open abdomen on arrival to the treatment facility	6/1/2014	No Yes Missing	
205	Dx	Injury Narrative	Open Abdomen on Discharge	Miscellaneous	Abd_Discharge	Indicates whether the patient had a surgically open abdomen on discharge from the treatment facility	6/1/2014	No Yes Missing	
206	Dx	Injury Narrative	Fragments	Miscellaneous	Fragments	Indicates whether patient arrived at the treatment facility with embedded fragments	6/1/2014	No Yes Missing	
207	Dx	Injury Narrative	Retained Fragments	Miscellaneous	Ret_Fragments	Indicates whether the patient was discharged from the treatment facility with retained fragments	6/1/2014	No Yes Missing	
208	Dx	Complications	Complication Code	Complications	Code	Complication code	All	Relevant Value for Field Missing	
209	DX	Complications	Complication Code	Complications	Code_Desc	Text description of complication code	All	Relevant Value for Field Missing	
210	Dx	Complications	Complication Date	Complications	Dx_Date	Date the complication was diagnosed	All	DDMMYY Missing	
211	Blood/Fluids	Blood/Fluids Information	Colloids (cc's) Type Total at This Facility	Fluids & Blood Products	Colloids_Total	Total number of milliliters (ml) of colloids patient received during the first 72 hours after arrival at the treatment facility	1/1/2007	[Range of Values] Not Applicable Missing	Applicable only when patient received blood products or sustained <b>burn injury</b>
212	Blood/Fluids	Blood/Fluids Information	Colloids (cc's) 1st 24 Hrs at This Facility	Fluids & Blood Products	Colloids_1st24	Number of milliliters (ml) of colloids patient received during the first 24 hours after arrival at the treatment facility	1/1/2007	[Range of Values] Not Applicable Missing	
213	Blood/Fluids	Blood/Fluids Information	Cryoprecipitates (units) 1st 24 hrs at Facility	Fluids & Blood Products	Cryo_1st24	Number of cryoprecipitate units patient received during the first 24 hours after arrival at the treatment facility	All	[Range of Values] Not Applicable Missing	
214	Blood/Fluids	Blood/Fluids Information	Cryoprecipitates (units) Type Total at Facility	Fluids & Blood Products	Cryo_Total	Total number of cryoprecipitate units patient received during length of stay at the treatment facility	All	[Range of Values] Not Applicable Missing	
215	Blood/Fluids	Blood/Fluids Information	Crystalloids (cc's) 1st 24 Hrs at Facility	Fluids & Blood Products	Crystalloids_1st24	Number of milliliters (ml) of crystalloids patient received during the first 24 hours after arrival at the treatment facility	All	[Range of Values] Not Applicable Missing	
216	Blood/Fluids	Blood/Fluids Information	Crystalloids (cc's) Type Total at Facility	Fluids & Blood Products	Crystalloids_Total	Total number of milliliters (ml) of crystalloids patient received during the first 72 hours after arrival at the treatment facility	All	[Range of Values] Not Applicable Missing	Applicable only when patient received blood products or sustained <b>burn injury</b>
217	Blood/Fluids	Blood/Fluids Information	Freeze Dried Plasma (units) 1st 24 hrs at Facility	Fluids & Blood Products	FDPlasma_1st24	Number of units of freeze dried plasma patient received during the first 24 hours after arrival at the treatment facility	6/1/2014	[Range of Values] Not Applicable Missing	Prior to 6/1/2014, FFP and FDP were captured together using the FFPlasma_1st24 variable
218	Blood/Fluids	Blood/Fluids Information	Freeze Dried Plasma (units) Type Total at Facility	Fluids & Blood Products	FDPlasma_Total	Total number of units of freeze dried plasma patient received during length of stay at the treatment facility	6/1/2014	[Range of Values] Not Applicable Missing	Prior to 6/1/2014, FFP and FDP were captured together using the FFPlasma_Total variable

# DATA ELEMENTS - Page 20

	A	B	C	D	E	F	G	H	I
1	Registry Tab	Registry Subtab(s)	Data Element	Codebook Tab	Variable Name	Variable Description	Years Available / Began	Value Description/Format	Notes
219	Blood/Fluids	Blood/Fluids Information	Fresh Frozen Plasma (units) 1st 24 hrs at Facility	Fluids & Blood Products	FFPlasma_1st24	Number of units of fresh frozen plasma patient received during the first 24 hours after arrival at the treatment facility	All	[Range of Values] Not Applicable Missing	
220	Blood/Fluids	Blood/Fluids Information	Fresh Frozen Plasma (units) Type Total at Facility	Fluids & Blood Products	FFPlasma_Total	Total number of units of fresh frozen plasma patient received during length of stay at the treatment facility	All	[Range of Values] Not Applicable Missing	
221	Blood/Fluids	Blood/Fluids Information	Frozen PRBC's (units) 1st 24 hrs	Fluids & Blood Products	FPRBC_1st24	Number of units of frozen packed red blood cells patient received during the first 24 hours after arrival at the treatment facility	6/1/2014	[Range of Values] Not Applicable Missing	Prior to 6/1/2014, FPRBCs and PRBCs were captured together using the PRBC_1st24 variable
222	Blood/Fluids	Blood/Fluids Information	Frozen PRBCs (units) Type Total at Facility	Fluids & Blood Products	FPRBC_Total	Total number of units of frozen packed red blood cells patient received during length of stay at the treatment facility	6/1/2014	[Range of Values] Not Applicable Missing	Prior to 6/1/2014, FPRBCs and PRBCs were captured together using the PRBC_Total variable
223	Blood/Fluids	Blood/Fluids Information	Platelets (units) 1st 24 hrs	Fluids & Blood Products	Platelets_1st24	Number of units of platelets patient received during the first 24 hours after arrival at the treatment facility	All	[Range of Values] Not Applicable Missing	
224	Blood/Fluids	Blood/Fluids Information	Platelets (units) Type Total at Facility	Fluids & Blood Products	Platelets_Total	Total number of units of platelets patient received during length of stay at the treatment facility	All	[Range of Values] Not Applicable Missing	
225	Blood/Fluids	Blood/Fluids Information	PRBCs (units) 1st 24 Hrs at Facility	Fluids & Blood Products	PRBC_1st24	Number of units of packed red blood cells patient received during the first 24 hours after arrival at the treatment facility	All	[Range of Values] Not Applicable Missing	
226	Blood/Fluids	Blood/Fluids Information	PRBCs (units) Type Total at Facility	Fluids & Blood Products	PRBC_Total	Total number of units of packed red blood cells patient received during length of stay at the treatment facility	All	[Range of Values] Not Applicable Missing	
227	Blood/Fluids	Blood/Fluids Information	THAM	Fluids & Blood Products	THAM	Indicates whether patient received tris-hydroxymethyl-aminomethane (THAM) at the treatment facility	1/1/2007	No Yes Missing	
228	Blood/Fluids	Blood/Fluids Information	Total cc's 1st 24 Hrs at Facility	Fluids & Blood Products	TotalFluids_1st24	Total number of milliliters (ml) of colloids and crystalloids patient received during the first 24 hours after arrival at the treatment facility	All	[Range of Values] Not Applicable Missing	
229	Blood/Fluids	Blood/Fluids Information	Total cc's Type Total at Facility	Fluids & Blood Products	TotalFluids	Total number of milliliters (ml) of colloids and crystalloids patient received during the first 72 hours after arrival at the treatment facility	All	[Range of Values] Not Applicable Missing	Applicable only when patient received blood products or sustained <b>burn injury</b>
230	Blood/Fluids	Blood/Fluids Information	Total Units First 24 Hours at Facility	Fluids & Blood Products	TotalBlood_1st24	Total number of units of all blood products patient received during the first 24 hours after arrival at the treatment facility	All	[Range of Values] Missing	
231	Blood/Fluids	Blood/Fluids Information	Total Units Type Total at Facility	Fluids & Blood Products	TotalBlood	Total number of units of all blood products patient received during length of stay at the treatment facility	All	[Range of Values] Missing	
232	Blood/Fluids	Blood/Fluids Information	Whole Blood (units) 1st 24 Hrs at This Facility	Fluids & Blood Products	WB_1st24	Number of units of whole blood patient received during the first 24 hours after arrival at the treatment facility	All	[Range of Values] Not Applicable Missing	
233	Blood/Fluids	Blood/Fluids Information	Whole Blood (units) Type Total at Facility	Fluids & Blood Products	WB_Total	Total number of units of whole blood patient received during length of stay at the treatment facility	All	[Range of Values] Not Applicable Missing	
234	Blood/Fluids	Factor VII/TXA Information	Factor VII	Fluids & Blood Products	FactorVII	Indicates whether patient received Factor VII at the treatment facility	6/1/2014	No Yes Missing	
235	Blood/Fluids	Factor VII/TXA Information	TXA	Fluids & Blood Products	TXA_Calc	Indicates whether patient received tranexamic acid at the treatment facility	6/1/2014	No Yes Missing	
236	Dx	Injury Narrative	AIS Predot	Injury Dx	AIS_Code_Desc	Text description of six-digit AIS injury code	All	Relevant Value for Field	
237	Dx	Injury Narrative	AIS Predot	Injury Dx	AIS_Code	Combined AIS injury and civilian severity codes	All	Relevant Value for Field	
238	Dx	Injury Narrative	AIS Civilian Severity (Civ Sev)						

## DATA ELEMENTS - Page 21

	A	B	C	D	E	F	G	H	I
1	Registry Tab	Registry Subtab(s)	Data Element	Codebook Tab	Variable Name	Variable Description	Years Available / Began	Value Description/Format	Notes
239	Dx	Injury Narrative	AIS Civilian Severity (Civ Sev)	Injury Dx	AIS_Civ_Severity	AIS civilian severity code	All	[Range of Values]	
240	Dx	Injury Narrative	AIS Military Severity (Mil Sev)	Injury Dx	AIS_Mil_Severity	AIS military severity code	All	[Range of Values]	
241	Dx	Injury Narrative	ICD-10 Code	Injury Dx	ICD_Code	ICD-9 or ICD-10 diagnosis code	ICD-9: 1/1/2002-2/28/2017 ICD-10: 3/1/2017	Relevant Value for Field	
242	Dx	Injury Narrative	ICD-9 Tri-Code						
243	Dx	Injury Narrative	ICD-10 Code	Injury Dx	Code_Desc	Text description of ICD-9 or ICD-10 diagnosis code	All	Relevant Value for Field	
244	Dx	Injury Narrative	ICD-9 Tri-Code						
245	Dx	Injury Narrative	ISS BR	Injury Dx	ISS_BR	ISS body region to which an AIS code is assigned	All	Head/Neck Face Chest Abdomen/Pelvis Extremities External	
246	Dx	Injury Narrative	Localizer 1	Injury Dx	Localizer_One	Two digit number that describes the side and aspect of an injury location	All	None Right Left Midline Bilateral Multiple Upper Lower Right Anterior/Frontal Right Middle/Parietal Right Posterior/Occipital Right Inferior/Temporal/Lower Right Superior/Upper Right Multiple Left Anterior/Frontal Left Middle/Parietal Left Posterior/Occipital Left Inferior/Temporal/Lower Left Superior/Upper Left Multiple Bilateral Anterior/Frontal Bilateral Middle/Parietal Bilateral Posterior/Occipital Bilateral Inferior/Temporal/Lower Bilateral Superior/Upper Bilateral Multiple Missing	



# DATA ELEMENTS - Page 23

	A	B	C	D	E	F	G	H	I
1	Registry Tab	Registry Subtab(s)	Data Element	Codebook Tab	Variable Name	Variable Description	Years Available / Began	Value Description/Format	Notes
249								Body Surface Forearm Body Surface Wrist Body Surface Hand Body Surface Finger Body Surface Torso Body Surface Back Body Surface Flank Body Surface Chest Body Surface Abdomen Body Surface Buttocks Body Surface Genitalia Body Surface Perineum Body Surface Hip Body Surface Thigh Body Surface Knee Body Surface Leg Body Surface Ankle Body Surface Foot Body Surface Toe	
250	Dx	Trauma Scores	Computed Scores	Trauma Scores	Max_Civ_Severity	Maximum AIS civilian severity code	All	[Range of Values]	
251				Trauma Scores	Max_Mil_Severity	Maximum AIS military severity code	All	[Range of Values]	
252				Trauma Scores	Civ_ISS	Civilian Injury Severity Score	All	[Range of Values] Missing	
253				Trauma Scores	Mil_ISS	Military Injury Severity Score	All	[Range of Values] Missing	
254				Trauma Scores	Civ_NISS	Civilian New Injury Severity Score	All	[Range of Values] Missing	
255				Trauma Scores	Mil_NISS	Military New Injury Severity Score	All	[Range of Values] Missing	
256				Trauma Scores	Civ_TRISS	Civilian Trauma Injury Severity Score	All	[Range of Values] Missing	
257				Trauma Scores	Mil_TRISS	Military Trauma Injury Severity Score	All	[Range of Values] Missing	
258				Dx	Trauma Scores	Max Severities by AIS Body Region	Trauma Scores	Max_Mil_AISBR1	Maximum AIS military severity code for AIS body region 1 (head)
259	Trauma Scores	Max_Mil_AISBR3	Maximum AIS military severity code for AIS body region 3 (neck)				All	[Range of Values] Missing	
260	Trauma Scores	Max_Mil_AISBR2	Maximum AIS military severity code for AIS body region 2 (face)				All	[Range of Values] Missing	
261	Trauma Scores	Max_Mil_AISBR4	Maximum AIS military severity code for AIS body region 4 (thorax)				All	[Range of Values] Missing	
262	Trauma Scores	Max_Mil_AISBR5	Maximum AIS military severity code for AIS body region 5 (abdomen)				All	[Range of Values] Missing	
263	Trauma Scores	Max_Mil_AISBR6	Maximum AIS military severity code for AIS body region 6 (spine)				All	[Range of Values] Missing	
264	Trauma Scores	Max_Mil_AISBR7	Maximum AIS military severity code for AIS body region 7 (upper extremities)				All	[Range of Values] Missing	
265	Trauma Scores	Max_Mil_AISBR8	Maximum AIS military severity code for AIS body region 8 (lower extremities and pelvis)				All	[Range of Values] Missing	
266	Trauma Scores	Max_Mil_AISBR9	Maximum AIS military severity code for body region 9 (external and thermal)				All	[Range of Values] Missing	
267	Trauma Scores	Max_Mil_AISOther	Maximum AIS military severity code for other AIS trauma regions				All	[Range of Values] Missing	
268	Trauma Scores	Max_Civ_AISBR1	Maximum AIS civilian severity code for AIS body region 1 (head)				All	[Range of Values] Missing	
269	Trauma Scores	Max_Civ_AISBR3	Maximum AIS civilian severity code for AIS body region 3 (neck)				All	[Range of Values] Missing	
270	Trauma Scores	Max_Civ_AISBR2	Maximum AIS civilian severity code for AIS body region 2 (face)	All	[Range of Values] Missing				

## DATA ELEMENTS - Page 24

	A	B	C	D	E	F	G	H	I
1	Registry Tab	Registry Subtab(s)	Data Element	Codebook Tab	Variable Name	Variable Description	Years Available / Began	Value Description/Format	Notes
271				Trauma Scores	Max_Civ_AISBR4	Maximum AIS civilian severity code for AIS body region 4 (thorax)	All	[Range of Values] Missing	
272				Trauma Scores	Max_Civ_AISBR5	Maximum AIS civilian severity code for AIS body region 5 (abdomen)	All	[Range of Values] Missing	
273				Trauma Scores	Max_Civ_AISBR6	Maximum AIS civilian severity code for AIS body region 6 (spine)	All	[Range of Values] Missing	
274				Trauma Scores	Max_Civ_AISBR7	Maximum AIS civilian severity code for AIS body region 7 (upper extremities)	All	[Range of Values] Missing	
275				Trauma Scores	Max_Civ_AISBR8	Maximum AIS civilian severity code for AIS body region 8 (lower extremities and pelvis)	All	[Range of Values] Missing	
276				Trauma Scores	Max_Civ_AISBR9	Maximum AIS civilian severity code for AIS body region 9 (external and thermal)	All	[Range of Values] Missing	
277				Trauma Scores	Max_Civ_AISOther	Maximum AIS civilian severity code for other AIS body regions	All	[Range of Values] Missing	
278	Dx	Trauma Scores	Max Severities by ISS Body Region	Trauma Scores	Max_Mil_ISSBR1	Maximum AIS military severity code for ISS body region 1 (head and neck)	All	[Range of Values] Missing	
279				Trauma Scores	Max_Mil_ISSBR2	Maximum AIS military severity code for ISS body region 2 (face)	All	[Range of Values] Missing	
280				Trauma Scores	Max_Mil_ISSBR3	Maximum AIS military severity code for ISS body region 3 (chest)	All	[Range of Values] Missing	
281				Trauma Scores	Max_Mil_ISSBR4	Maximum AIS military severity code for ISS body region 4 (abdomen and pelvic	All	[Range of Values] Missing	
282				Trauma Scores	Max_Mil_ISSBR5	Maximum AIS military severity code for ISS body region 5 (extremities and pelvic girdle)	All	[Range of Values] Missing	
283				Trauma Scores	Max_Mil_ISSBR6	Maximum AIS military severity code for ISS body region 6 (external)	All	[Range of Values] Missing	
284				Trauma Scores	Max_Civ_ISSBR1	Maximum AIS civilian severity code for ISS body region 1 (head and neck)	All	[Range of Values] Missing	
285				Trauma Scores	Max_Civ_ISSBR2	Maximum AIS civilian severity code for ISS body region 2 (face)	All	[Range of Values] Missing	
286				Trauma Scores	Max_Civ_ISSBR3	Maximum AIS civilian severity code for ISS body region 3 (chest)	All	[Range of Values] Missing	
287				Trauma Scores	Max_Civ_ISSBR4	Maximum AIS civilian severity code for ISS body region 4 (abdomen and pelvic contents)	All	[Range of Values] Missing	
288				Trauma Scores	Max_Civ_ISSBR5	Maximum AIS civilian severity code for ISS body region 5 (extremities and pelvic girdle)	All	[Range of Values] Missing	
289				Trauma Scores	Max_Civ_ISSBR6	Maximum AIS civilian severity code for ISS body region 6 (external)	All	[Range of Values] Missing	
290	Dx	Pre-Existing Conditions	Pre-Existing Conditions	Pre-existing Conditions	PreExisting	Conditions diagnosed prior to the current injury and/or were previously documented in the medical record	All	Relevant Value for Field Not Applicable Missing	
291	Dx	Non-Trauma Diagnoses	ICD-10 Non-Trauma Codes	Non-trauma	ICD_Code	ICD-9 or ICD-10 non-trauma diagnosis code	ICD-9: 1/1/2002-2/28/2017 ICD-10: 3/1/2017	Relevant Value for Field Missing	
292	Dx	Non-Trauma Diagnoses	Non-Trauma Diagnoses (ICD-9)						
293	Dx	Non-Trauma Diagnoses	ICD-10 Non-Trauma Codes	Non-trauma	Code_Desc	Text description of ICD-9 and ICD-10 non-trauma diagnosis codes	All	Relevant Value for Field Missing	
294	Dx	Non-Trauma Diagnoses	Non-Trauma Diagnoses (ICD-9)						
295	Dx	Non-Trauma Diagnoses	NTD Date	Non-trauma	Dx_Date	Date of non-trauma diagnosis	All	DDMMYY Missing	
296	Discharge	Discharge Information	Date/Time of Discharge/Death	Discharge Info, Vitals & Labs	Discharge_Date	Date the patient was discharged alive from the treatment facility or date of death	All	DDMMYY Missing	



## DATA ELEMENTS - Page 25

	A	B	C	D	E	F	G	H	I
1	Registry Tab	Registry Subtab(s)	Data Element	Codebook Tab	Variable Name	Variable Description	Years Available / Began	Value Description/Format	Notes
297				Discharge Info, Vitals & Labs	Discharge_Time	Time the patient was discharged alive from the treatment facility or time of death	All	HH:MM Missing	
298	Discharge	Discharge Information	Discharge Status	Discharge Info, Vitals & Labs	Discharge_Vital_Status	Patient's vital status at time of discharge from the treatment facility	All	Alive Deceased Missing	
299	Discharge	Discharge Information	Discharged To	Discharge Info, Vitals & Labs	Discharge_Status	Status of living patients upon discharge from the treatment facility	All	Medical Hold Returned to Duty AWOL Discharged Home Left Against Medical Advice Non-disability Separation for Drugs or Alcohol Separate for Failure to Meet Medical Standards Transferred to Army MTF Transferred to Navy MTF Transferred to Air Force MTF Discharged to Other Federal Facility Discharged to Civilian Facility Discharged to Civilian Acute Care Facility Discharged to Civilian Nursing or Psychiatric Treatment Facility Discharged to Civilian Residential Facility or Rehabilitation Center Light Duty Sick Quarters Other Morgue Transferred to Coalition MTF Missing	
300	Discharge	Discharge Information	Discharged To- If Other	Discharge Info, Vitals & Labs	Discharge_Status_Other	Free text field describing status of living patients upon discharge from the treatment facility	All	Relevant Value for Field Not Applicable Missing	Applicable only when Discharge_Status = 62
301	Discharge	Discharge Information	Final Outcomes DOW	Discharge Info, Vitals & Labs	DOW	Indicates whether the patient died of wounds at the treatment facility	All	No Yes Not Applicable Missing	Applicable only when Battle_Status = 1 and Mil_Branch = 1, 2, 5, 6, 7, 8, 9, 10, 13, 17, 19
302	Discharge	Discharge Information	If Transferred, Facility	Discharge Info, Vitals & Labs	Transfer_Facility	Facility to which the patient was transferred	All	Code Values and Descriptions Available Only Upon Special Approval	
303	Discharge			Discharge Info, Vitals & Labs	Transfer_Facility_DC	Text description of facility to which the patient was transferred	All	Code Values and Descriptions Available Only Upon Special Approval	
304	Discharge	Discharge Information	Total Days (Hospital)	Discharge Info, Vitals & Labs	HospDays_Total	Number of days patient remained at treatment facility	All	[Range of Values] Missing	The day of discharge is not included in the count unless the patient is admitted and discharged the same day
305	Discharge	Discharge Information	Total Days ICU	Discharge Info, Vitals & Labs	ICUDays_Total	Number of days patient was treated in facility ICU	All	[Range of Values] Missing	
306	Discharge	Discharge Information	Total Days Ventilator	Discharge Info, Vitals & Labs	VentDays_Total	Number of days patient was on a ventilator	All	[Range of Values] Missing	
307	Discharge	Discharge Information	Transfer Platform	Discharge Info, Vitals & Labs	Transport_Platform	Vehicle platform used to transport patient	6/1/2014	Code Values and Descriptions Available Only Upon Special Approval	Applicable only when Discharge_Status = 21, 22, 23, 24, 25, 26, 27, 28, or 64
308	Discharge	Discharge Information	Transfer Platform If Other	Discharge Info, Vitals & Labs	Transport_Platform_Other	Free text field describing vehicle platform used to transport patient	6/1/2014	Code Values and Descriptions Available Only Upon Special Approval	Applicable only when Discharge_Status = 21, 22, 23, 24, 25, 26, 27, 28, or 64 and Transport_Platform = 11, 27, 29, 41, 50 or 52

## DATA ELEMENTS - Page 26

	A	B	C	D	E	F	G	H	I
1	Registry Tab	Registry Subtab(s)	Data Element	Codebook Tab	Variable Name	Variable Description	Years Available / Began	Value Description/Format	Notes
309	Discharge	Discharge Information	Transport Mode	Discharge Info, Vitals & Labs	Transport_Mode	Mode of patient transport	6/1/2014	Air Ground Sea Not Applicable Missing	Applicable only when Discharge_Status = 21, 22, 23, 24, 25, 26, 27, 28, or 64
310	Discharge	Discharge Information	Transport Team	Discharge Info, Vitals & Labs	Transport_Team	Team providing care during transport of patient	6/1/2014	Aeromedical Evacuation Acute Lung Rescue Team CASEVAC CCAST CCATT Civilian Fever Team MEDEVAC/Dustoff Standard MEDEVAC/Dustoff Blood Capable MERT NICU Transport Team Other PEDRO TCET Burn Team Not Applicable Missing	Applicable only when Discharge_Status = 21, 22, 23, 24, 25, 26, 27, 28, or 64
311	Discharge	Discharge Information	Transport Team If Other	Discharge Info, Vitals & Labs	Transport_Team_Other	Specific team providing care during transport	6/1/2014	Relevant Value for Field Not Applicable Missing	Applicable only when Discharge_Status = 21, 22, 23, 24, 25, 26, 27, 28, or 64 and Transport_Team = 12
312	Discharge	Discharge Information	Transport Type	Discharge Info, Vitals & Labs	Transport_Type	Generic type of vehicle used to transport patient	6/1/2014	Fixed Wing Rotary Wing Tilt Rotor Assault Medical Other Ship Not Applicable Missing	Applicable only when Discharge_Status = 21, 22, 23, 24, 25, 26, 27, 28, or 64
313	Discharge	Discharge Vitals	[RTS]	Discharge Info, Vitals & Labs	RTS	Revised trauma score calculated using the patient's GCS, systolic blood pressure and respiratory rate data	1/1/2007	[Range of Values] Not Applicable Missing	Applicable only when Resp_Assist = 0 and Vital_Status = 6
314	Discharge	Discharge Vitals	BG- ABGs/VBGs Drawn	Discharge Info, Vitals & Labs	ABG	Indicates whether patient's arterial blood gas was drawn	1/1/2007	No Yes Not Applicable Missing	Applicable only when Vital_Status = 6
315				Discharge Info, Vitals & Labs	VBG	Indicates whether patient's venous blood gas was drawn	10/1/2011	No Yes Not Applicable Missing	Applicable only when Vital_Status = 6
316	Discharge	Discharge Vitals	BG- Base Deficit/Excess	Discharge Info, Vitals & Labs	Base_Deficit	Patient's base deficit/excess in mEq/L	1/1/2007	[Range of Values] Not Applicable Missing	Applicable only when Vital_Status = 6
317	Discharge	Discharge Vitals	BG- PaCO2	Discharge Info, Vitals & Labs	PaCO2	Patient's partial pressure of carbon dioxide in mmHg	1/1/2007	[Range of Values] Not Applicable Missing	Applicable only when Vital_Status = 6
318	Discharge	Discharge Vitals	BG- PaO2	Discharge Info, Vitals & Labs	PaO2	Patient's partial pressure of oxygen in mmHg	1/1/2007	[Range of Values] Not Applicable Missing	Applicable only when Vital_Status = 6
319	Discharge	Discharge Vitals	BG- pH	Discharge Info, Vitals & Labs	Blood_pH	pH of patient's arterial blood sample	1/1/2007	[Range of Values] Not Applicable Missing	Applicable only when Vital_Status = 6

## DATA ELEMENTS - Page 27

	A	B	C	D	E	F	G	H	I
1	Registry Tab	Registry Subtab(s)	Data Element	Codebook Tab	Variable Name	Variable Description	Years Available / Began	Value Description/Format	Notes
320	Discharge	Discharge Vitals	GCS Eye	Discharge Info, Vitals & Labs	GCS_Eye	Glasgow Coma Scale score for responsiveness of patient's eyes	1/1/2007	1, None 2, To Pain 3, To Voice 4, Spontaneous Not Applicable Missing	Applicable only when Vital_Status = 6
321	Discharge	Discharge Vitals	GCS Motor	Discharge Info, Vitals & Labs	GCS_Motor	Glasgow Coma Scale score for patient's motor activities	1/1/2007	1, None 2, Abnormal Extension 3, Abnormal Flexion 4, Withdraws to Pain 5, Localizes Pain 6, Obeys Commands Not Applicable Missing	Applicable only when Vital_Status = 6
322	Discharge	Discharge Vitals	GCS Total	Discharge Info, Vitals & Labs	GCS_Total	Patient's total Glasgow Coma Scale score as calculated from the Eye, Verbal and Motor scores	1/1/2007	[Range of Values] Not Applicable Missing	Applicable only when Vital_Status = 6
323	Discharge	Discharge Vitals	GCS Verbal	Discharge Info, Vitals & Labs	GCS_Verbal	Glasgow Coma Scale score for patient's verbal abilities	1/1/2007	1, None 2, Incomprehensible Sounds 3, Inappropriate Words 4, Confused 5, Oriented Not Applicable Missing	Applicable only when Vital_Status = 6
324	Discharge	Discharge Vitals	Hct	Discharge Info, Vitals & Labs	Hct	Patient's hematocrit concentration	1/1/2007	[Range of Values] Not Applicable Missing	Applicable only when Vital_Status = 6
325	Discharge	Discharge Vitals	Height	Discharge Info, Vitals & Labs	Height	Patient's height in inches at time of admission	1/1/2007	[Range of Values] Not Applicable Missing	Applicable only when Vital_Status = 6
326	Discharge	Discharge Vitals	Hgb	Discharge Info, Vitals & Labs	Hgb	Patient's hemoglobin concentration in g/dL	10/1/2011	[Range of Values] Not Applicable Missing	Applicable only when Vital_Status = 6
327	Discharge	Discharge Vitals	INR	Discharge Info, Vitals & Labs	INR	Patient's international normalized ratio	1/1/2007	[Range of Values] Not Applicable Missing	Applicable only when Vital_Status = 6
328	Discharge	Discharge Vitals	Intubated	Discharge Info, Vitals & Labs	Intubated	Indicates whether patient was intubated at the time vitals were taken	1/1/2007	No Yes Not Applicable Missing	Applicable only when Vital_Status = 6
329	Discharge	Discharge Vitals	Intubated- If Yes, Method	Discharge Info, Vitals & Labs	Intubated_Method	Specific method of intubation	1/1/2007	Combitube Esophageal Obturator Airway ETT - Route Not Specified Laryngeal Mask Airway Nasotracheal Needle Cricothyrotomy Orotacheal Surgical Cricothyrotomy Tracheostomy Unintentional Esophageal Intubation Not Applicable Missing	Applicable only when Vital_Status = 6 and Intubated = 1
330	Discharge	Discharge Vitals	Pain Scale	Discharge Info, Vitals & Labs	Pain_Scale	Numeric value indicating the patient's pain level	1/1/2007	[Range of Values] Not Applicable Missing	Applicable only when Vital_Status = 6 and Pain = 1

## DATA ELEMENTS - Page 28

	A	B	C	D	E	F	G	H	I
1	Registry Tab	Registry Subtab(s)	Data Element	Codebook Tab	Variable Name	Variable Description	Years Available / Began	Value Description/Format	Notes
331	Discharge	Discharge Vitals	Pain?	Discharge Info, Vitals & Labs	Pain	Indicates whether patient was experiencing pain at the time vitals were taken	6/1/2014	No Yes Not Applicable Missing	Applicable only when Vital_Status = 6
332	Discharge	Discharge Vitals	Paralytic Agents	Discharge Info, Vitals & Labs	Paralytic_Agents	Indicates whether patient was medically or chemically paralyzed at the time vitals were taken	1/1/2007	No Yes Not Applicable Missing	Applicable only when Vital_Status = 6
333	Discharge	Discharge Vitals	Platelet Count	Discharge Info, Vitals & Labs	Platelet_Count	Patient's platelet count x 10 <sup>9</sup> /L	1/1/2007	[Range of Values] Not Applicable Missing	Applicable only when Vital_Status = 6
334	Discharge	Discharge Vitals	Pulse Quality	Discharge Info, Vitals & Labs	Pulse_Quality	Patient's strongest pulse quality	1/1/2007	Strong Weak Doppler Absent Not Applicable Missing	Applicable only when Vital_Status = 6
335	Discharge	Discharge Vitals	Pulse Rate	Discharge Info, Vitals & Labs	Pulse_Rate	Patient's unassisted pulse rate in beats/minute	1/1/2007	[Range of Values] Not Applicable Missing	Applicable only when Vital_Status = 6
336	Discharge	Discharge Vitals	Recorded Date/Time	Discharge Info, Vitals & Labs	Vitals_Date	Date when the patient's vitals were taken	10/1/2011	DDMMYY Not Applicable Missing	Applicable only when Vital_Status = 6
337				Discharge Info, Vitals & Labs	Vitals_Time	Time when patient's vitals were taken	10/1/2011	HH:MM Not Applicable Missing	Applicable only when Vital_Status = 6
338	Discharge	Discharge Vitals	Respiration Assisted	Discharge Info, Vitals & Labs	Resp_Assist	Indicates whether patient's respiration was assisted at the time vitals were taken	1/1/2007	No Yes Not Applicable Missing	Applicable only when Vital_Status = 6
339	Discharge	Discharge Vitals	Respiration Assisted- If Yes, Type	Discharge Info, Vitals & Labs	Resp_Assist_Type	Type of respiratory support provided to the patient	1/1/2007	Bag-Valve-Mask Ventilator Not Applicable Missing	Applicable only when Vital_Status = 6 and Resp_Assist = 1
340	Discharge	Discharge Vitals	Respiratory Rate	Discharge Info, Vitals & Labs	Resp_Rate	Patient's respiratory rate in breaths/minute	1/1/2007	[Range of Values] Not Applicable Missing	Applicable only when Vital_Status = 6
341	Discharge	Discharge Vitals	SaO2	Discharge Info, Vitals & Labs	SaO2	Patient's percent oxygen saturation	1/1/2007	[Range of Values] Not Applicable Missing	Applicable only when Vital_Status = 6
342	Discharge	Discharge Vitals	SBP/DBP	Discharge Info, Vitals & Labs	SBP	Patient's unassisted systolic blood pressure in mmHg	1/1/2007	[Range of Values] Not Applicable Missing	Applicable only when Vital_Status = 6
343				Discharge Info, Vitals & Labs	DBP	Patient's unassisted diastolic blood pressure in mmHg	1/1/2007	[Range of Values] Not Applicable Missing	Applicable only when Vital_Status = 6
344	Discharge	Discharge Vitals	Sedated	Discharge Info, Vitals & Labs	Sedated	Indicates whether patient was sedated at the time vitals were taken	1/1/2007	No Yes Not Applicable Missing	Applicable only when Vital_Status = 6
345	Discharge	Discharge Vitals	Temperature	Discharge Info, Vitals & Labs	Temp	Patient's temperature in °F	1/1/2007	[Range of Values] Not Applicable Missing	Applicable only when Vital_Status = 6

## DATA ELEMENTS - Page 29

	A	B	C	D	E	F	G	H	I
1	Registry Tab	Registry Subtab(s)	Data Element	Codebook Tab	Variable Name	Variable Description	Years Available / Began	Value Description/Format	Notes
346	Discharge	Discharge Vitals	Temperature Route	Discharge Info, Vitals & Labs	Temp_Route	Route used to obtain patient's temperature	1/1/2007	Axillary Foley Oral Rectal Transtemporal Tympanic Other Dermal Not Applicable Missing	Applicable only when Vital_Status = 6
347	Discharge	Discharge Vitals	Weight	Discharge Info, Vitals & Labs	Weight	Patient's weight in pounds at time of discharge	1/1/2007	[Range of Values] Not Applicable Missing	Applicable only when Vital_Status = 6